

**Establishing Embassy to Significant Religious Objects (SRO)**  
**Ark of the Covenant, Holy Grail & Caravan of Treasures**



**Grail Technologies**



**Embassy Seal**



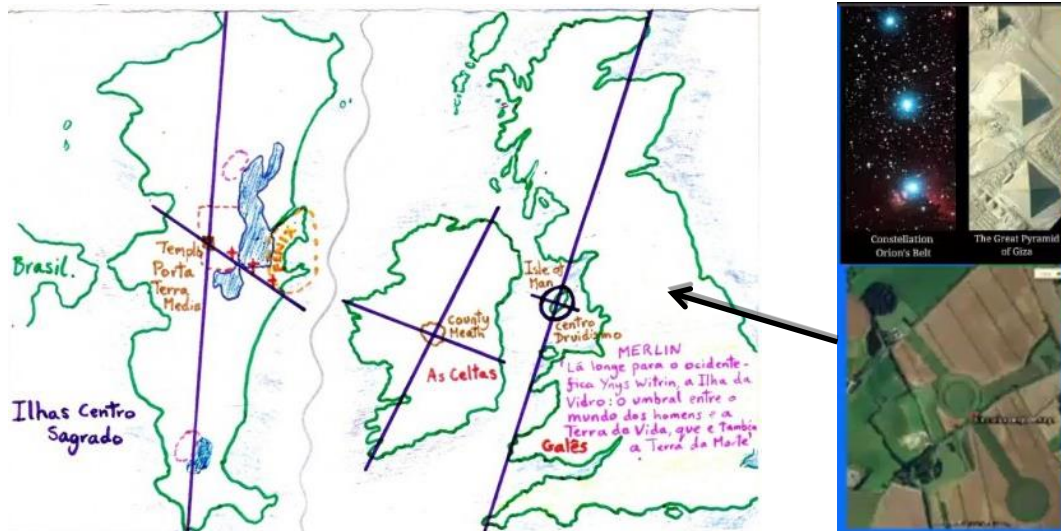
**YEAR OF THE RED SELF-EXISTING MOON**  
JULY 26, 2022 - JULY 25, 2023

## Overview

During year 2005 a Hong Kong Shanghai Banking Corporation credit card was used to fund an archaeological expedition and supporting studios project in the town of Lagoa da Conceicao, Florianopolis, Ilha Santa Catarina, Brazil, intention being to provide dramatized recovery of Significant Religious Objects (SRO) – Ark of the Covenant and Holy Grail.

Previous study of *'Galactic Alignment: The Transformation of Consciousness According to Mayan, Egyptian, and Vedic Traditions'*, a book by John Major Jenkins, provided knowledge of Celtic sacred cartography of the British Isles. This knowledge combined with lessons in divination provided by anthropologist Carlos Castaneda's *'Lessons of Don Juan'* revealed several storage locations on Ilha Santa Catarina, two of which received preliminary excavation. Expedition commenced due to my experiencing onset of a limb paralysis disease *'The Wormwood'*.

Presenting belief that a guide for retrieving the Holy Grail – a large nuclear fusion combustion cauldron - is stored in a precarious low height cave central to Ilha Santa Catarina. The cave floor also containing three objects moulded in granite *'The Sword in the Stone'*. The guide leading to a location in the Yorkshire Pennines and proximity of Thornborough Henge whose layout matches that of the pyramids of Giza and three stars of Orion's belt. Scottish bravehearted politics of the 14<sup>th</sup> Century with intent to claim northern lands of England that could be reborn today with the crowning of a new Queen of Scotland – an executive role to deliver SRO technology to Japan.



Sacred Celtic cartography of the British Isles applied to Ilha Santa Catarina, Brazil and Thornborough Henge, Yorkshire



Grandfather Dr Robert Parker of Scots Clan Sinclair and the 'Sword in the Stone'

## Grail Technologies - Table of Contents

1. Declaration of Archaeological Discoveries – Ilha Santa Catarina, Brazil.
2. Grail Technologies
3. Site One – Ark Temple
4. Site Two – Beach Headland Throne Complex and Iron Curtain
5. The Ben Ben Stone and Phoenix Stargate
6. The Ark and the Eye of God
7. Iha Santa Catarina and the Egyptian Pyramid Field
8. Stargate Pennine
9. Grail Cauldron Location
10. Iguacu Falls, a Terraforming Dome and the Grail Squadron
11. Multiple Stargates of our Crater Realm



Scene from 'Indiana Jones and the Kingdom of the Crystal Skull', maybe Richard's name should have been 'Otley' .....



# 1. Declaration of Archaeological Discoveries – Ilha Santa Catarina, Brazil.

Following commencement of Studios Project, Lagoa da Conceicao 2005

## **Site 1**

Ancient Stone Temple Site close to geographic centre of island.

A large tunnel and cave complex entrances. Each sealed by stone masonry and 'Granite Mix Concrete' revealing evidence of use of Nuclear Fusion technology.

Excavation revealing :

Stone Safe – believed containing crystal amulet and tour party talismans.

Three Moulded Granite Storage Pods – 'The Sword in the Stone'.

Tunnel believed storing the Ark of the Covenant (pyramid capstone) and acting as a tomb to tour party leader and his horse – a death at an entrance to a Saxon Kingdom of Middle Earth.

Site also believed to be storing a guide to retrieve the 'Holy Grail' – Nuclear Fusion Combustion Cauldron – possible location being Pennine Mountains Yorkshire, England.

## **Site 2**

Beach-headland – Ancient Throne Complex and Hall of Conjugation

Huge 'Bank Vaulted' construction – 'Light Sabre – Excalibur' used to create storage openings in wall of rock – sealed with 'Iron Curtain'.

Site storing Ark caravan of items – see document 'Opus 8'

East of 'Hall of Conjugation' buried miniature 'Pyramid City' with alignments to the rising sun – a plan of designation for island mountains conversion to pyramid geometry.

Excavation of thousands of tonnes of material designed to provide defensive fortification – precious items remaining in place – reclaiming throne site function.

## **Site 3**

Biblioteca – closed pre-prepared stone monument site showing similar geometry to Egyptian Sphinx but with inverted Incan nose of wisdom.

## Site 4

Gold Bullion store – Huge ‘Menir Stone’ sitting on cantilever ledge acting as roof to cave entrance sealed with tonnes of ‘Grail Concrete’.

## Site 5

4+ entrances to sealed tunnel network local to sites 2, 3 and 4.

## Site 6

Sealed tunnel entrance connecting island to continental mainland.

## Informed Parties as of 2007 – 2011

- Adnir Ramos – Anthropologist and Researcher, founder of Institute IMMA Arqueoastronomia, Barra da Lagoa
- IPHAN – Archaeology Department, Florianopolis.
- Jehovah Witnesses – Lagoa Da Conceicao
- Church of the Latter Day Saints – Florianopolis
- Department of Geology – Florianopolis State University
- Department of Physics – Florianopolis State University
- Federal Police and British Foreign Office
- Brazilian Army – Public Relations Officer, Captain Carlos Lima



Grail Rock and Lightsaber used for Phoenix Stargate

## 2. Grail Technologies

### Grail Technologies

Ark of the Covenant and Holy Grail are items of technology sculptured from a special stone originating from an inverted 'Dark Star' - a crystal fragment used to power Light Sabre Excalibur.



### Some uses of the Grail Cauldron

Insert rock into Grail Cauldron and initiate nuclear fusion combustion by adding copper.

Handle rock in it's molten lava state.



A cosmic concrete mixer for making rock moldings of various hardness grades, such as the Sword in the Stone.

Add Iron and out pours Iron Curtain

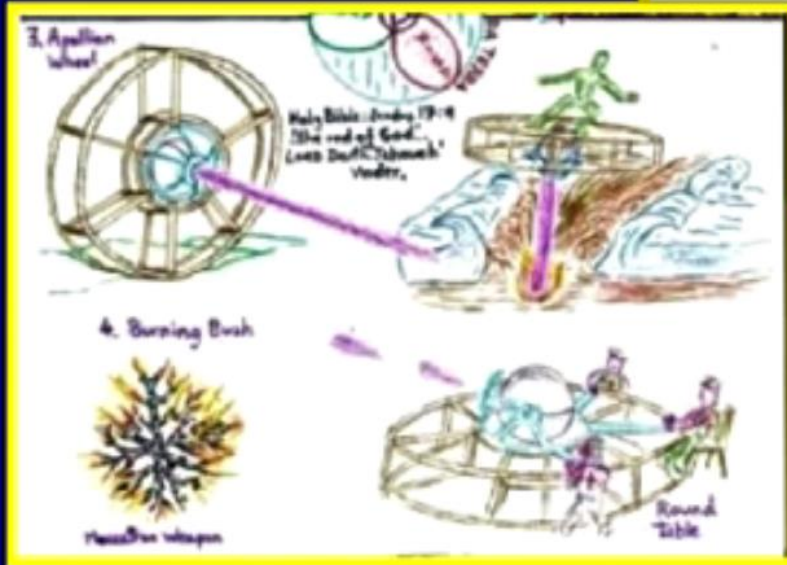
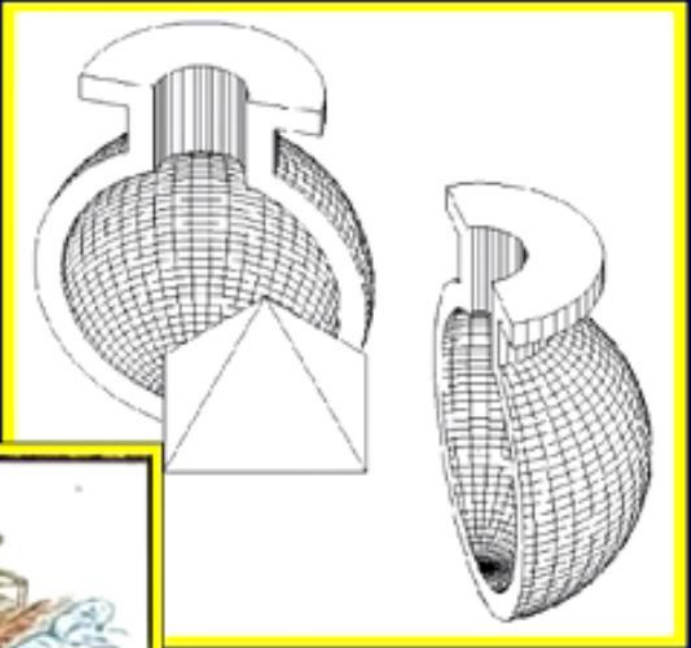


## Ark and Grail combined

Grail Cauldron is split vertically, allowing insertion of Ark Capstone.

Together providing a lethal 'Super Ray Cannon'

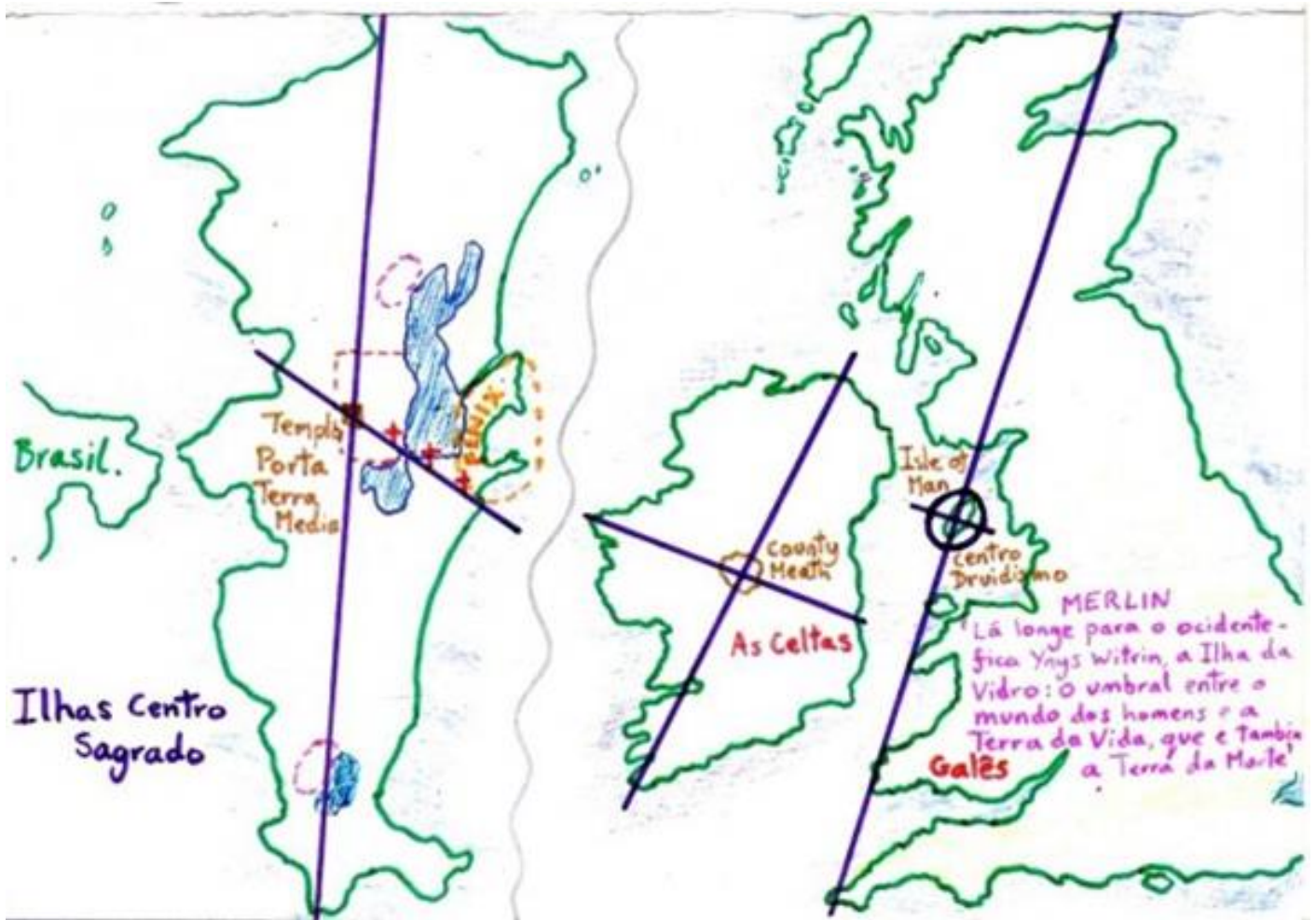
This usage terminated by (the believed) fracturing of Ark Capstone by the Babylonians



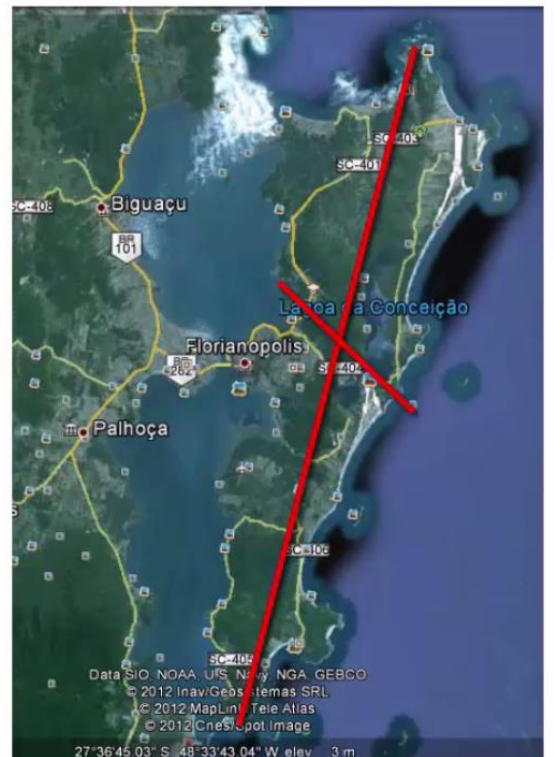
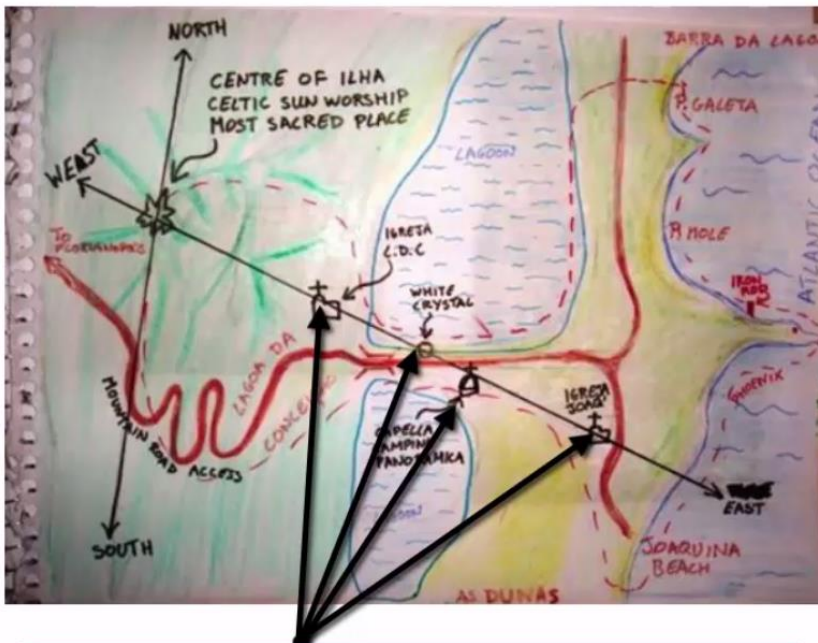
'Round Table' is an 'Apollian Wheel' designed for the battlefield.



### 3. Site One – Ark Temple



Applying knowledge of Celtic sacred cartography of the British Isles, identifying a ley line and seeing partial pyramid geometry carved into landscape resulted in archaeological expedition searching mountainous centre of Ilha de Santa Catarina year 2005 onwards.



Church of town Lagoa da Conceição, a large white crystal embedded in ground close to bridge, Black Madonna shrine and a Church in Joaquina Beach - line up on a 'ley line' dividing island - east to west.





Bosnian Pyramid

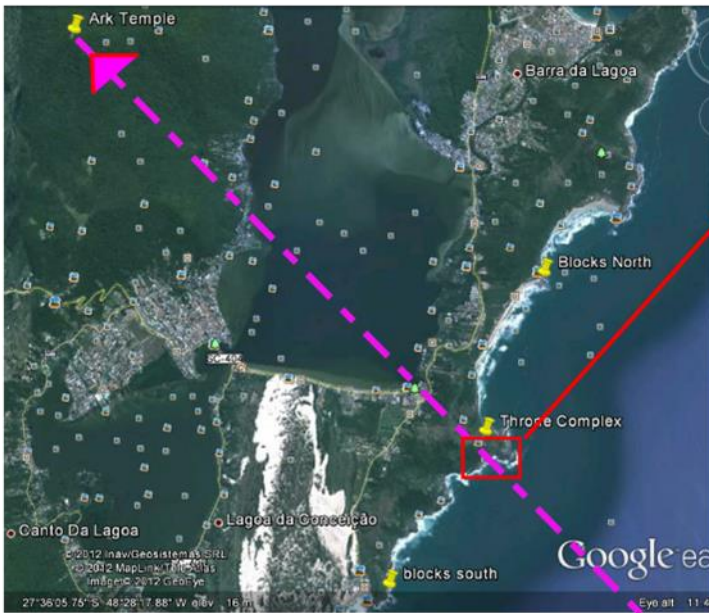


Pyramid of the Sun - Mexico

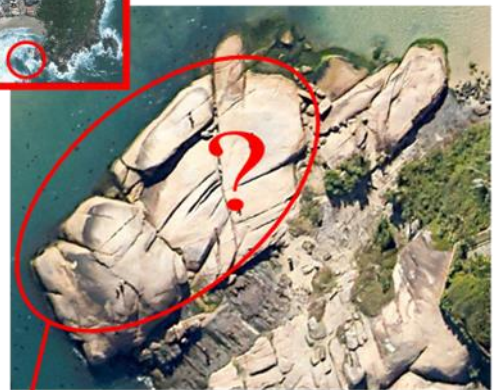


Landscape central to Ilha Santa Catarina

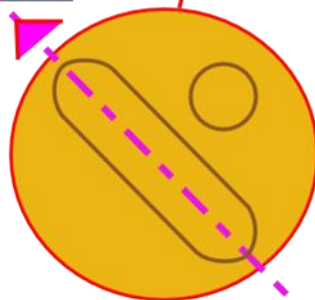
Pyramid geometry forming landscape central to Ilha Santa Catarina



**Joaquina Direction Marker**

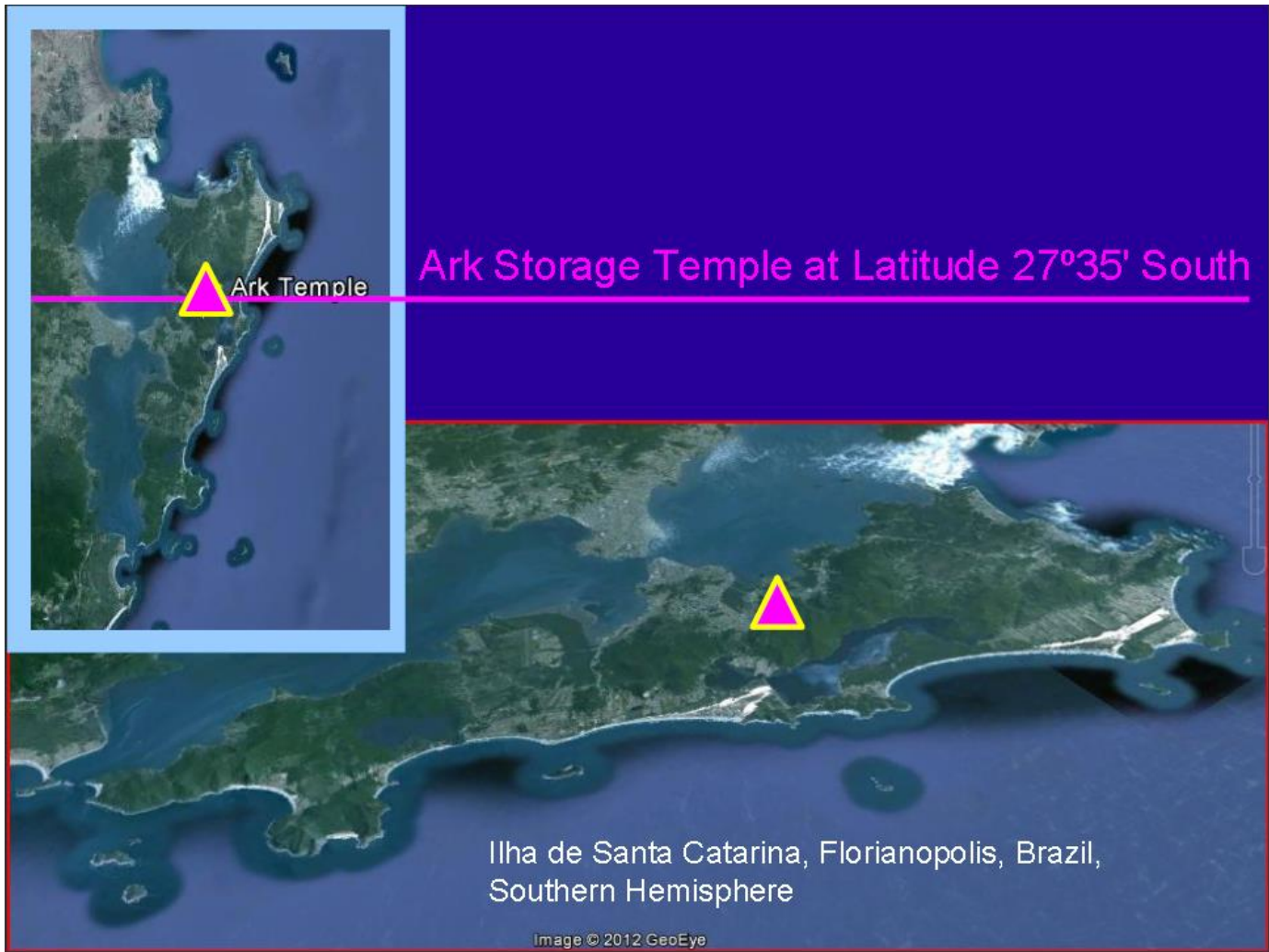


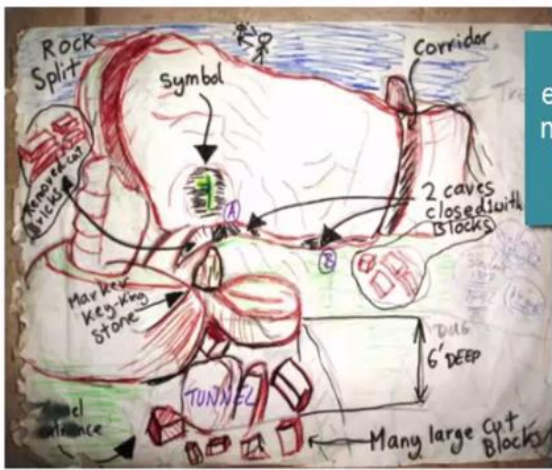
Same item of technology used to split this rock



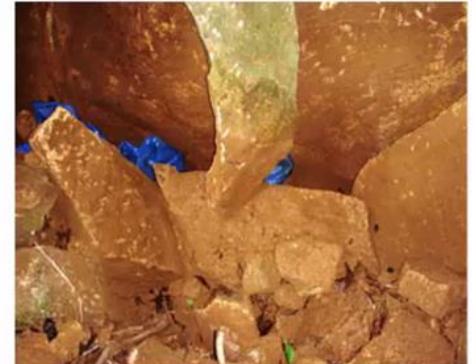
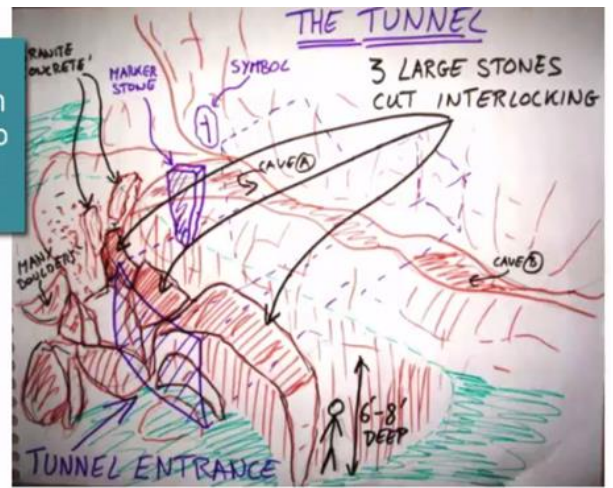
Scored on rocks at Joaquina Beach is a cylindrical hole and accompanying angled line.

Belief that this points to the Temple site on top of overlooking mountain.





Closed tunnel excavation, situated on mountain top central to Ilha Santa Catarina - 2007

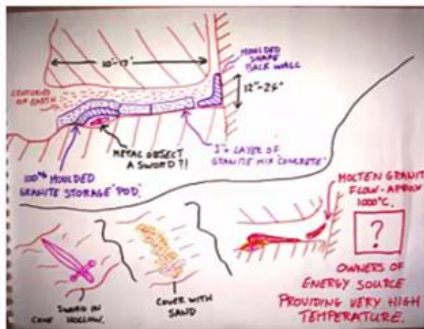


Stone Masonry of 'Castle Builders'!



First carved stone removed

Low height cave system above tunnel entrance



Symbol etched in stone above cave and tunnel system



Three items moulded in granite on cave floor - the 'Sword in the Stone'!, the power of the Sun in the hands of men.



# ARK TEMPLE STAGE OF DIVINE MANIFESTATION



Populating a Saxon Kingdom  
of Middle Earth beneath Ilha  
Santa Catarina



## Sun Clock along Island coastline





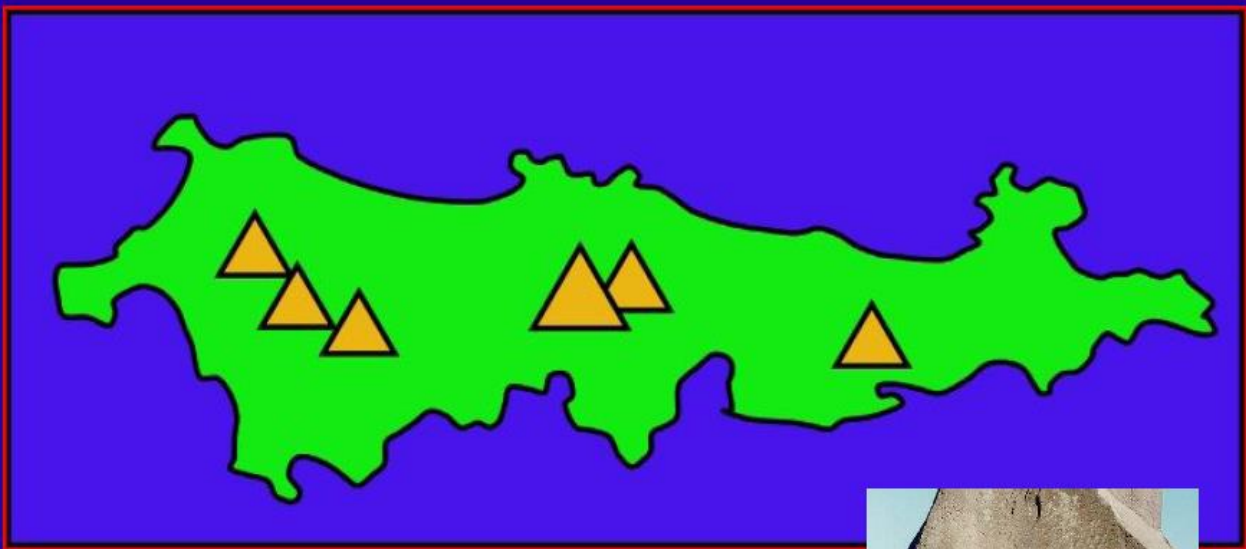
Various Rock Carvings  
 – some showing  
 'Pyramid Planning'  
 and 'The All Seeing  
 Eye' – but inverted for  
 Middle Earth



Israeli Tomb  
 Entrance



Granite Rock of Ilha Santa Catarina designated for  
 construction of 5 or more pyramids



# 4. Site Two – Beach Headland Throne Complex and Iron Curtain



Throne Complex in 'Shoulder' of Dormant Phoenix'



Excalibur – Light Sabre containing a Crystal Fragment of Grail Rock

- Ancient stone complex showing Da-Vinci code monument



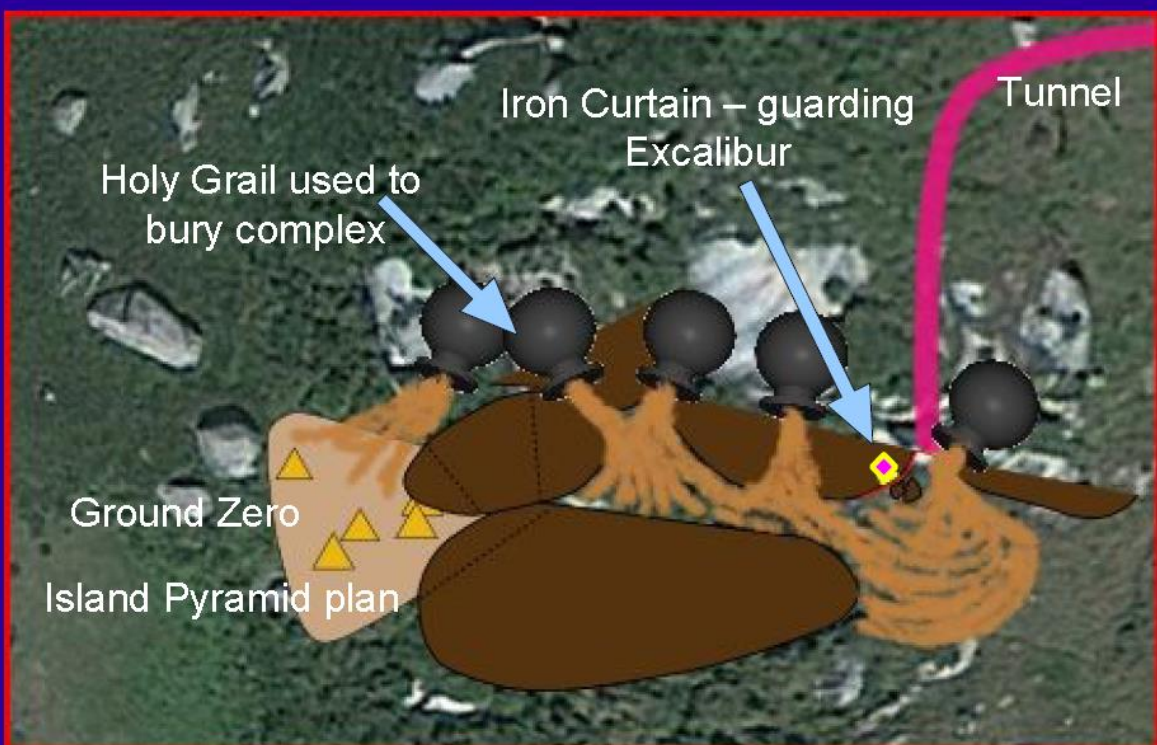
- Ark Caravan of Items from 18<sup>th</sup> Dynasty Egyptian Pharaoh – Light Sabre used to cut rock for melting in Grail Cauldron



Iron Curtain Bank Vault

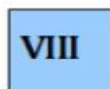
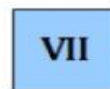
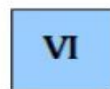
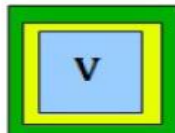
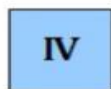
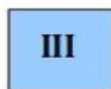
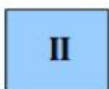


Throne Complex buried under material exiting the Holy Grail - modern excavation will create defensive installation -

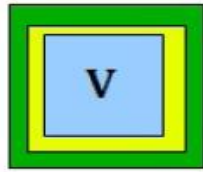




Artist's impression of Iron Curtain and Eight shielded storage vaults



Presented as '**Opus 8**' – Eight storage boxes cut into rock face and sealed with Iron Curtain. Opus 8 – objects of alien origin, box 5 believed to be storing Excalibur a Lightsabre.



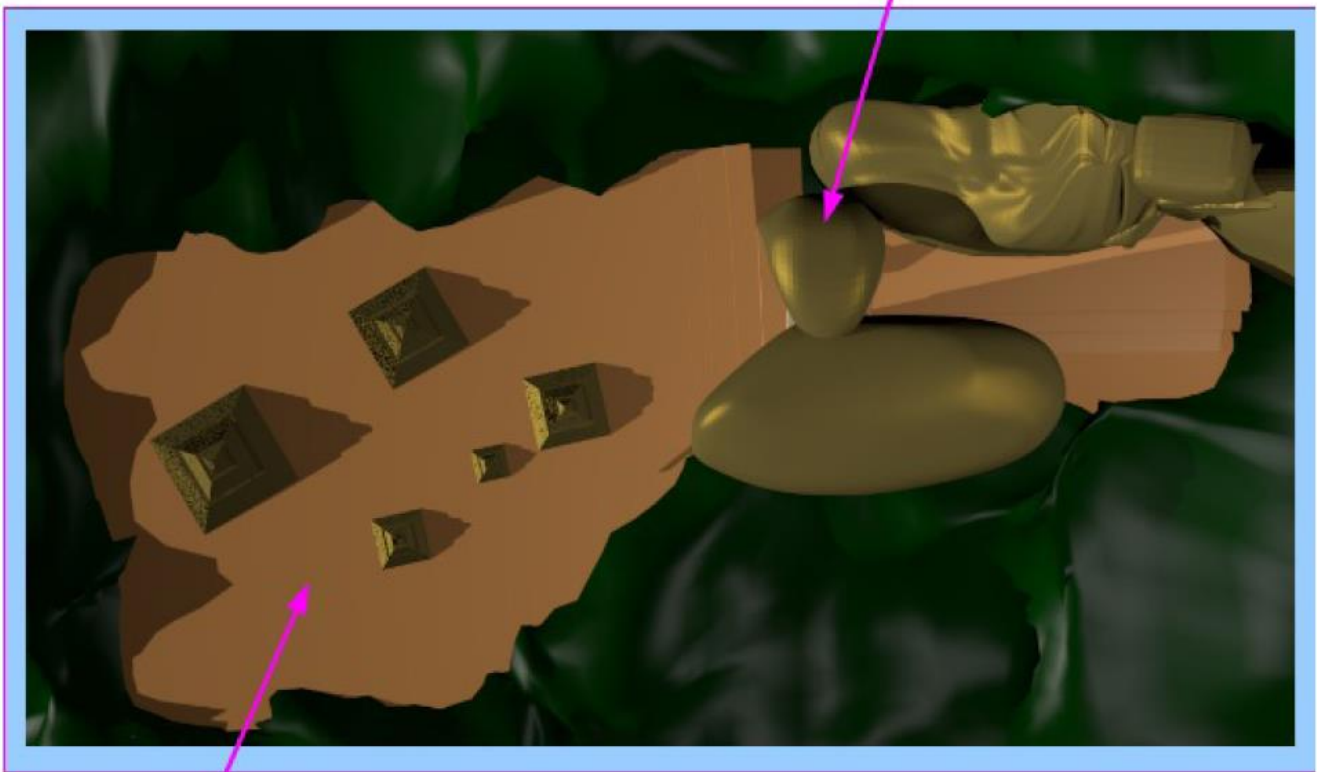
Box 5 believed to be storing  
'Excalibur' a 'Light Sabre'



Much evidence of it's usage locally. Caution required on retrieval as may be protected by glass phile containing noxious gas – work of medieval shaman/ druid.



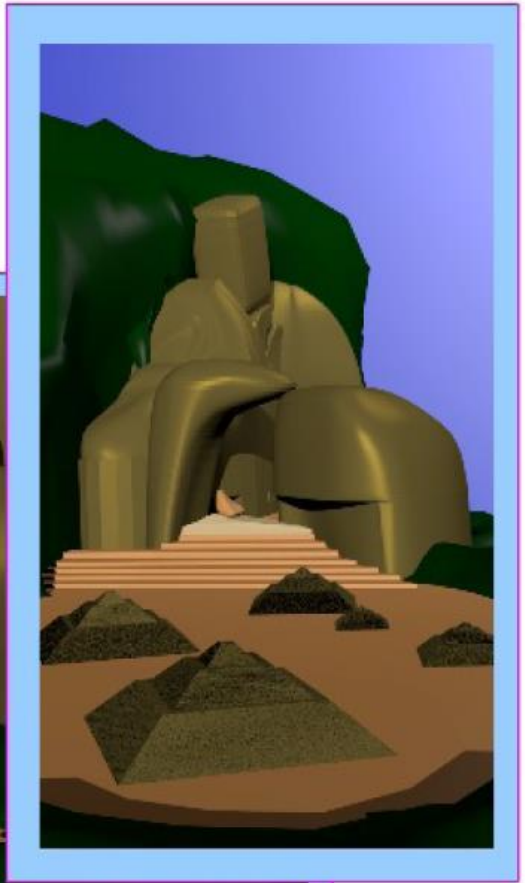
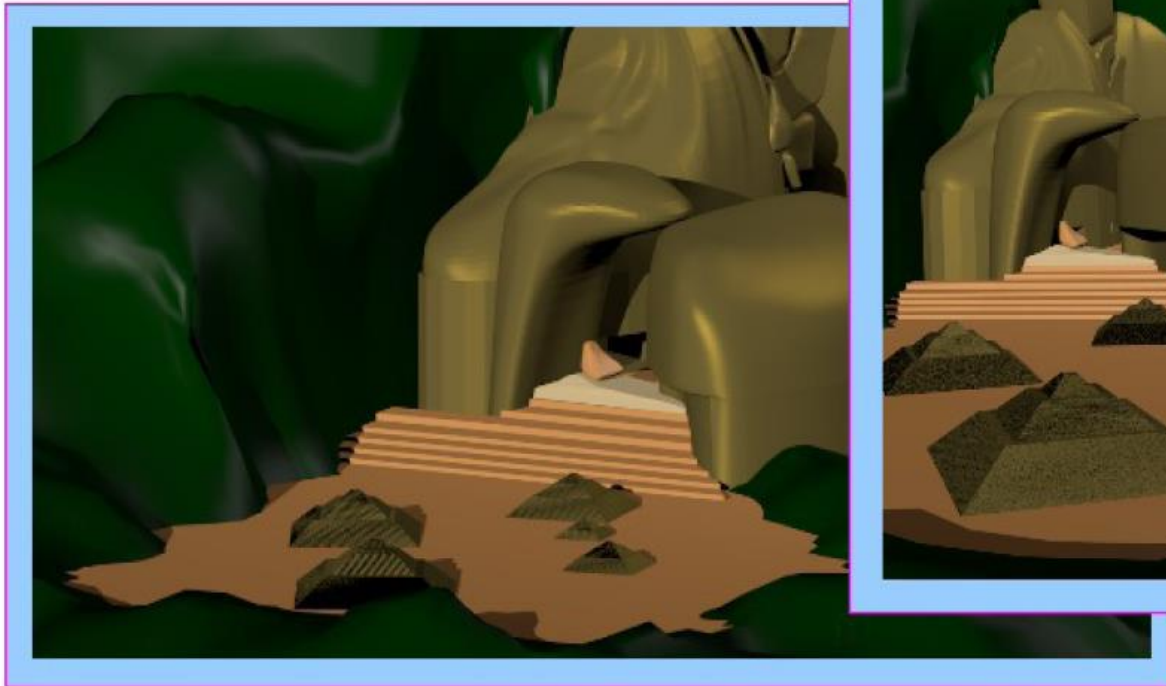
Hall of conjugation



Pyramid Garden – scale models of islands planned pyramid construction.



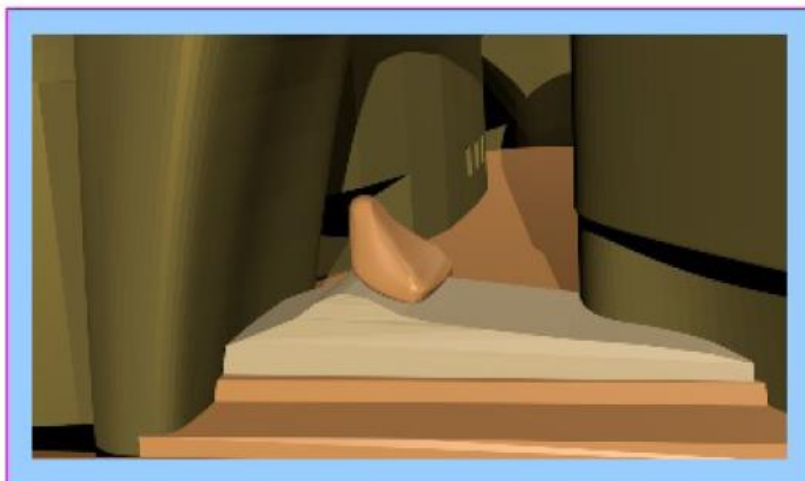
Currently buried under thousands of tonnes of earth



An Ankh is buried under a rock intended for acts of conjugation



This facility known as 'Rock The Boat!'



## 5. The Ben Ben Stone and Phoenix Stargate



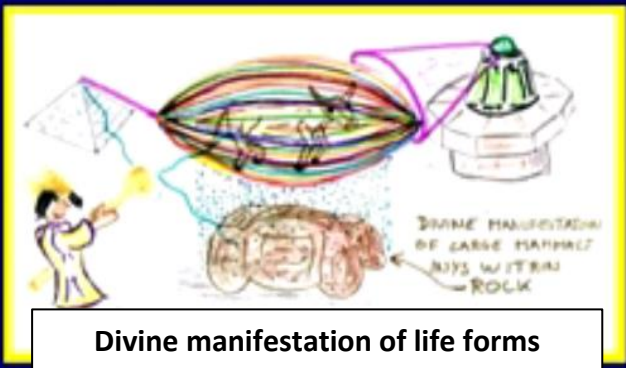
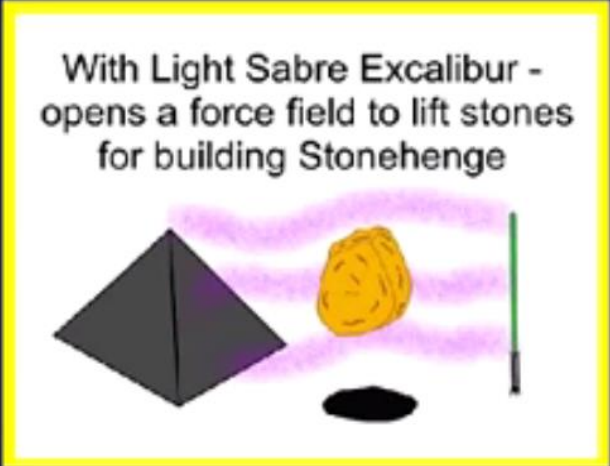
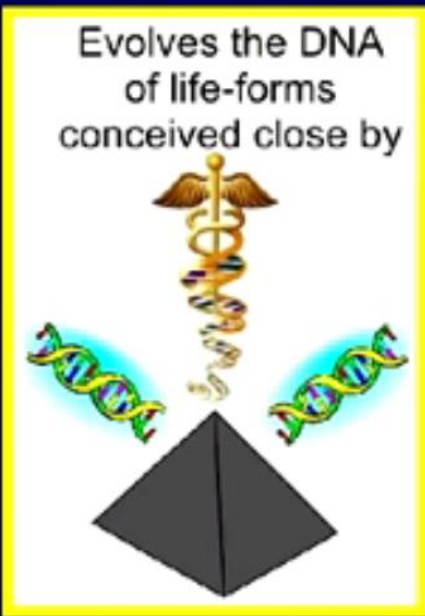
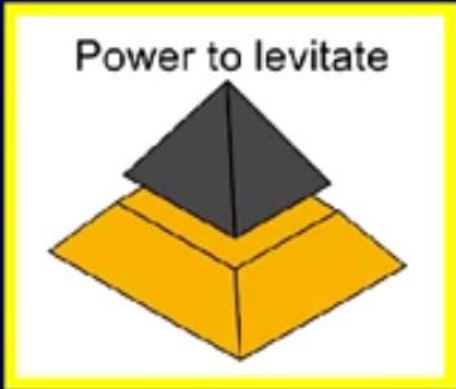
To the ancient Egyptians the Ben-Ben stone is regarded as the solidified seed of Atum – the stone of creation that fell from the sky during the first time (Sep Tempi) and sat upon a huge obelise in the Sun temple of Heliopolis.



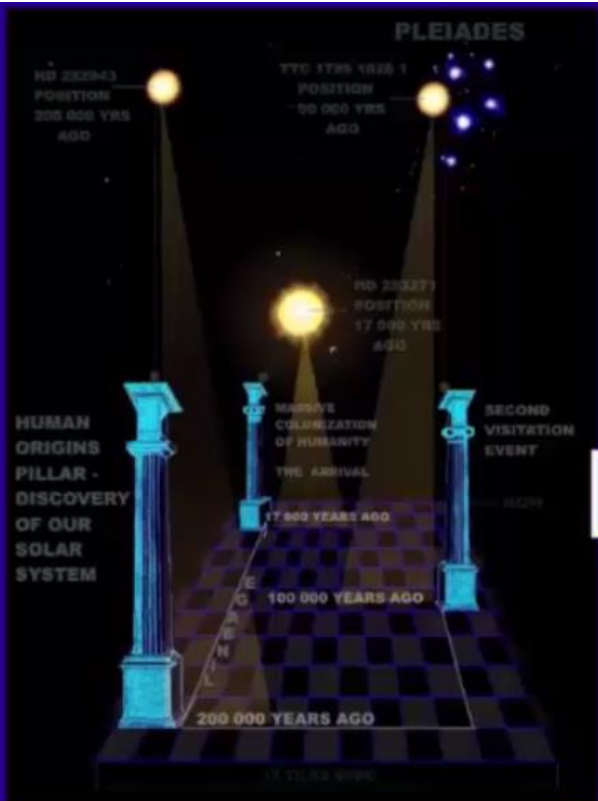
It was on this stone that the Phoenix or Bennu Bird would return every 12,594 years and place it's new egg - at that moment a new era of mankind would start. The Bennu Bird coming from the 'Isle of Fire' a mythical place where the Gods were born.



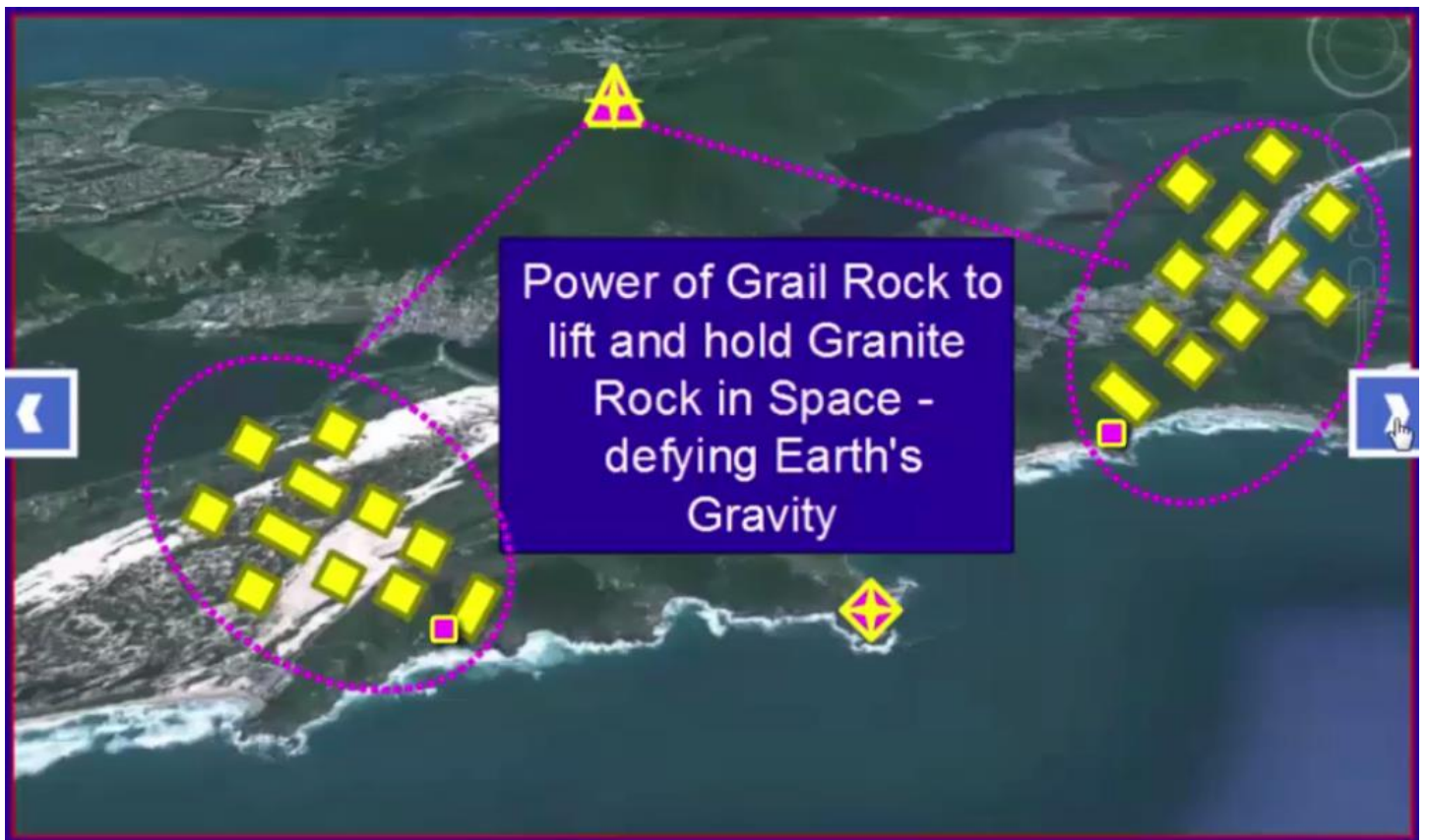
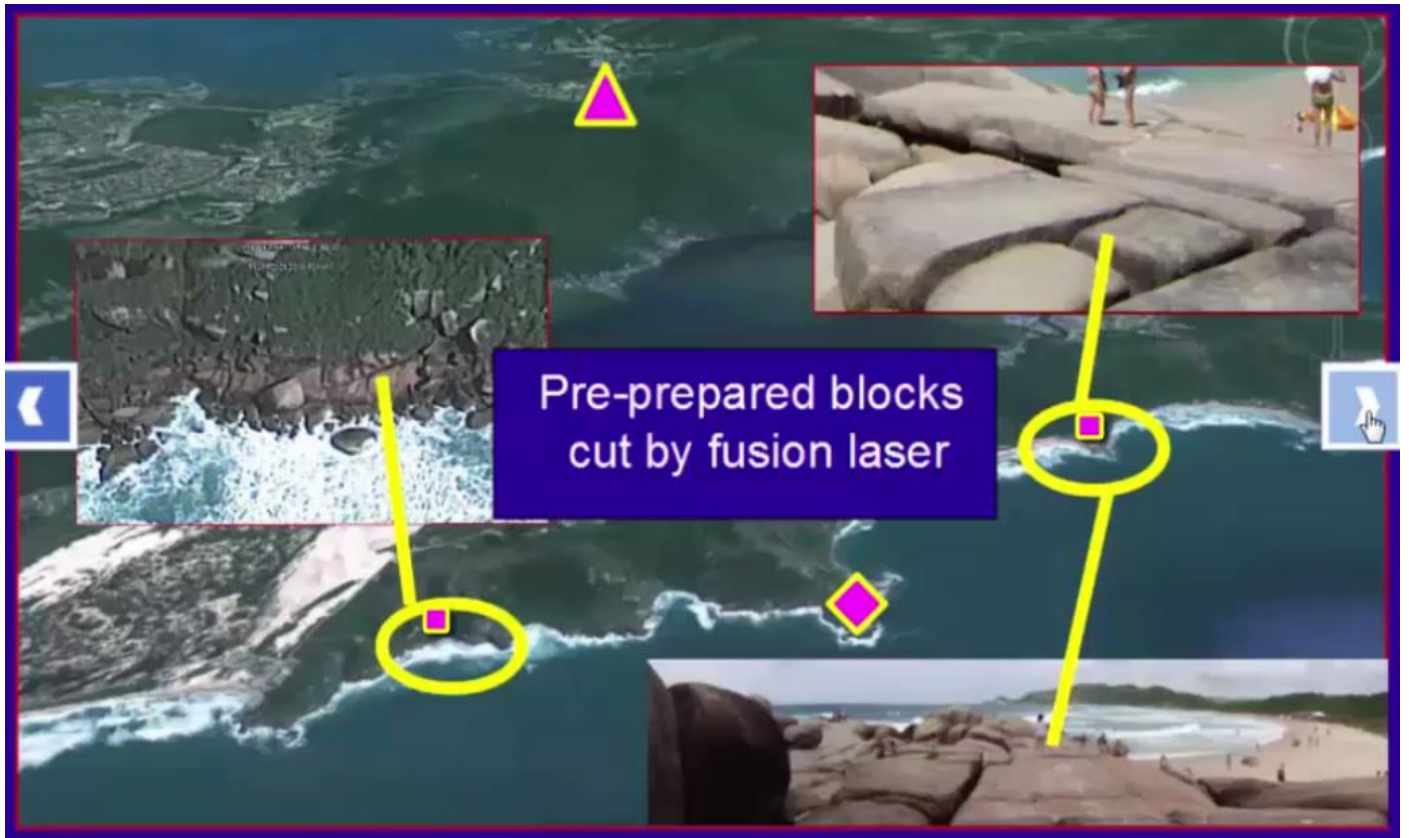
**Some uses of the Ark Capstone**



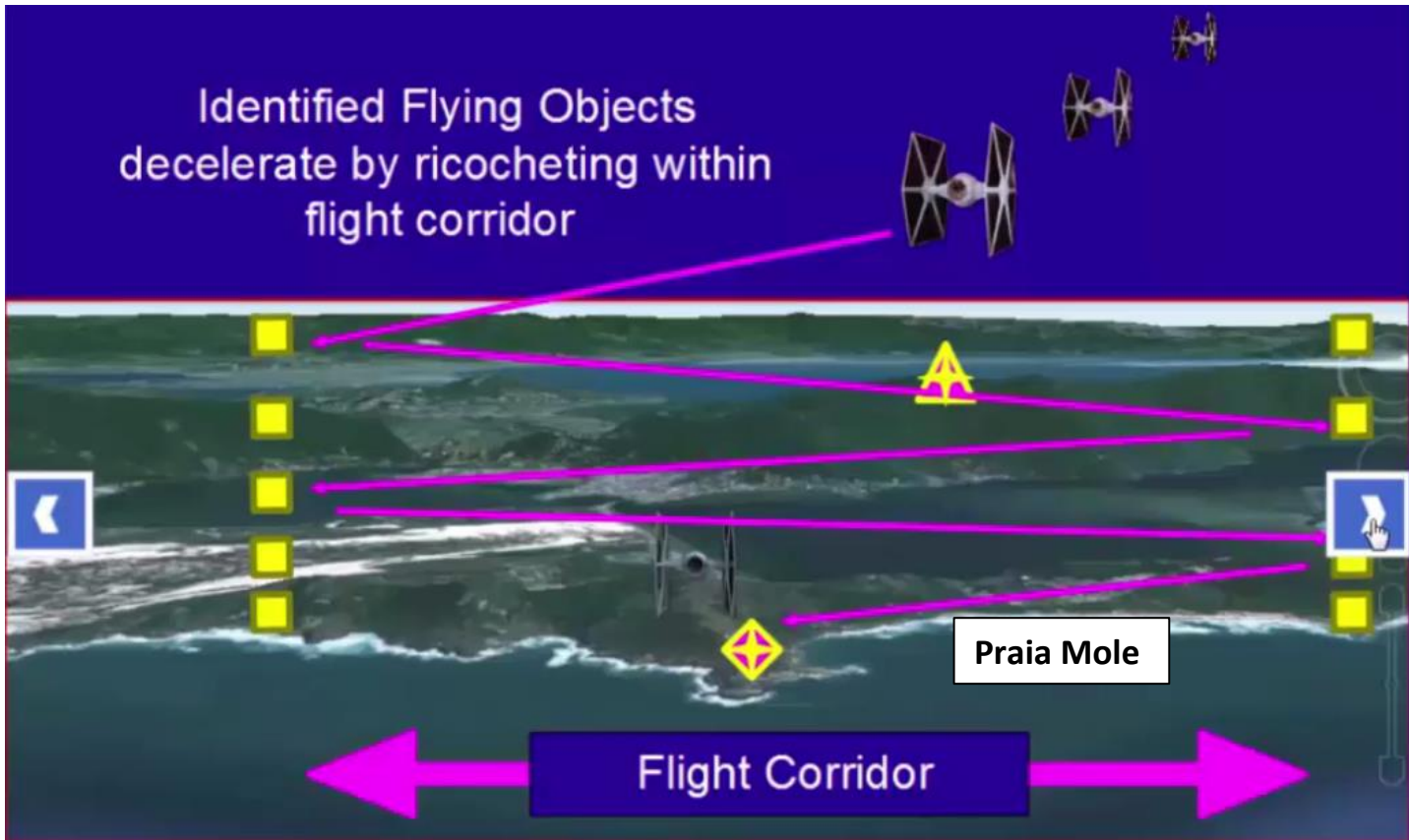
Divine manifestation of life forms sculptured from Granite Rock...



Masonic Symbolism revealing 3 Sun like stars and moments of 'Divine Intervention'....



Identified Flying Objects  
decelerate by ricocheting within  
flight corridor



Bringing Star Wars to Planet Earth...



Indiana Jones' final words in 'Raiders of the Lost Ark'  
were -  
"Never under estimate the power of the thing...."



TV news report of unidentified flying object over Praia Mole – 2018. See video ‘Ovni na Praia Mole’



Scene from video ‘The Fall of Man and Return of Our Jedai - part 2’

## 6. The Ark and the Eye of God

- **arch-, archi-, archo-, -archus**: Pronunciation: /ark/, /arkou/, /arkai/, /arkes/. Origin: Ancient Greek: ἀρχός (arkhós), meaning: ruler; ἀρχικός (arkhikós), meaning: ruling. Used for exceptionally large or widespread animals.

Examples: *Archelon* ("ruling turtle"); *Architeuthis* ("ruling squid"); *Thalattoarchon* ("Sea Ruler"); *Archosaur* ("ruling lizard"); *Andrewsarchus* ("Andrews's ruler")

Here follows an application of knowledge conveyed in video Godgevlamste – ‘Crater Earth Arch-ons’

The word **ARK** in Greek is represented by letters **αρχ** α alpha, ρ rho, χ chi



The Roman letter P replaces the Greek letter ρ and PAX translates from Latin to PEACE



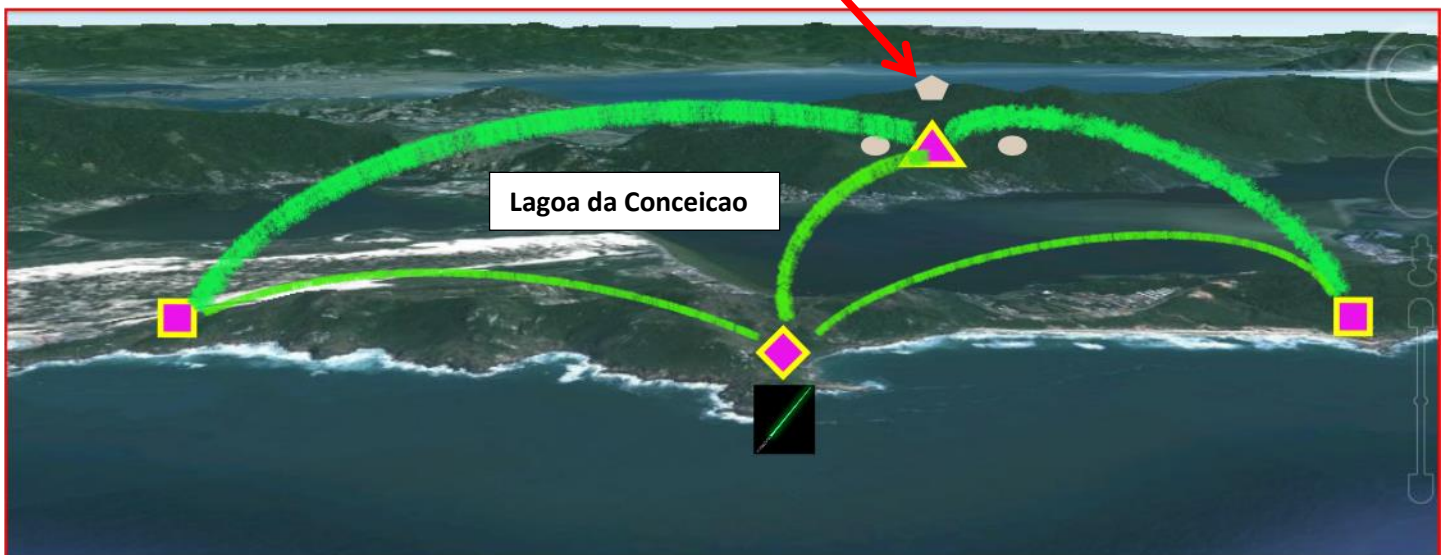
The logo for PAX CHRISTI (Ω Omega) translated from Latin to Greek provides the letters αρχω which in English gives the word ‘Archo’



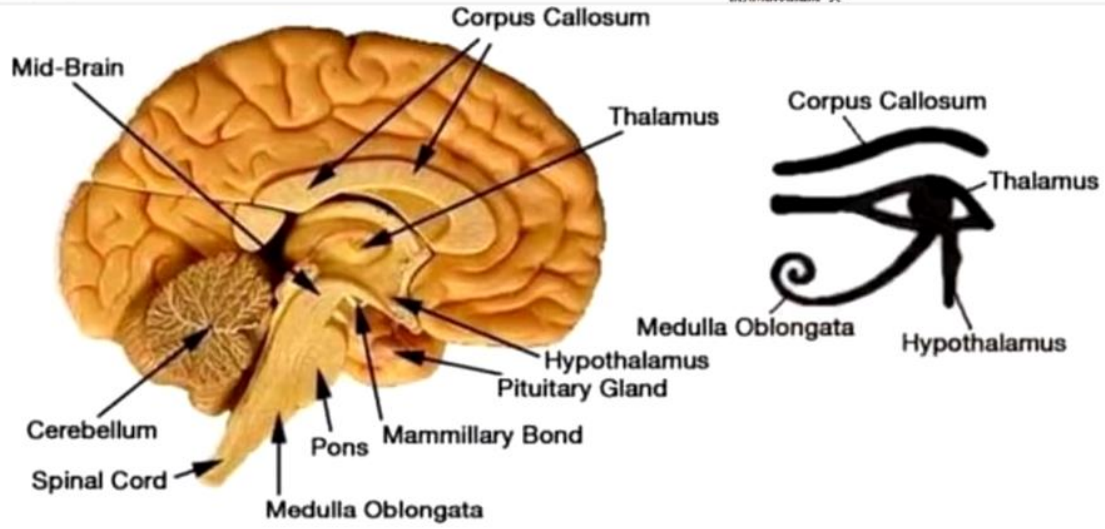
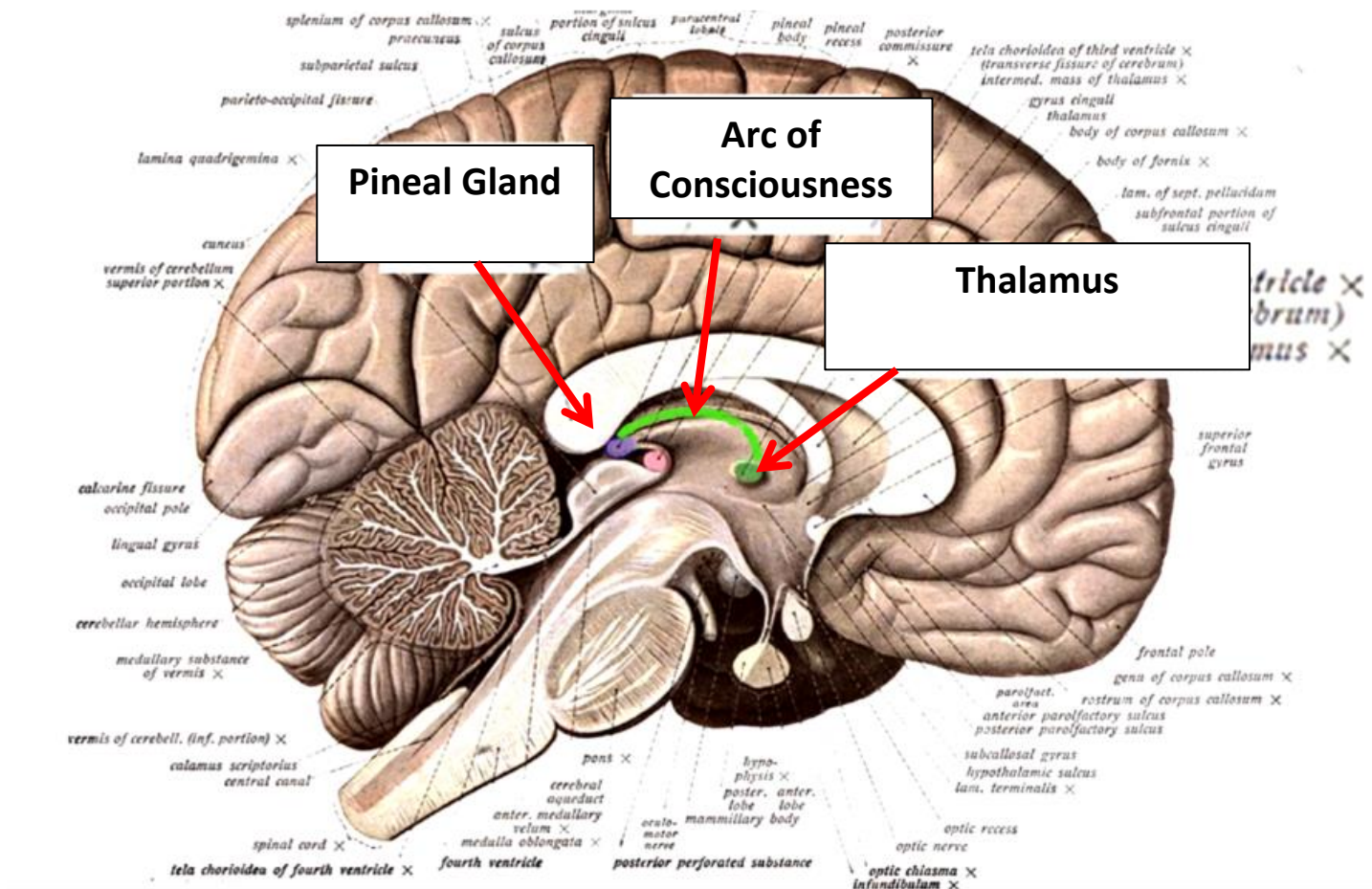
αρχω

Three closed entrances to mountain tunnel system – a portal to a Saxon kingdom of middle earth.

Archo



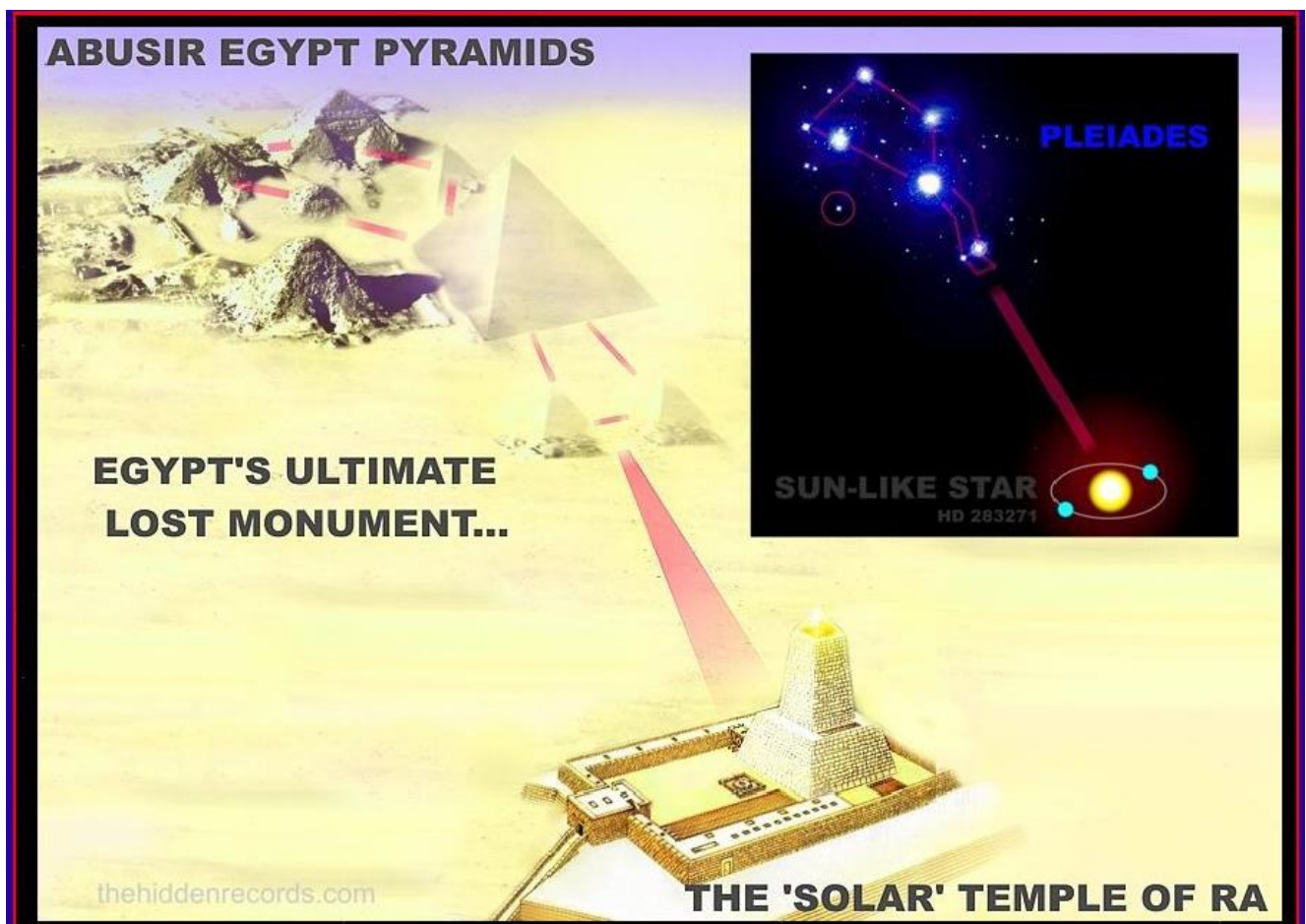
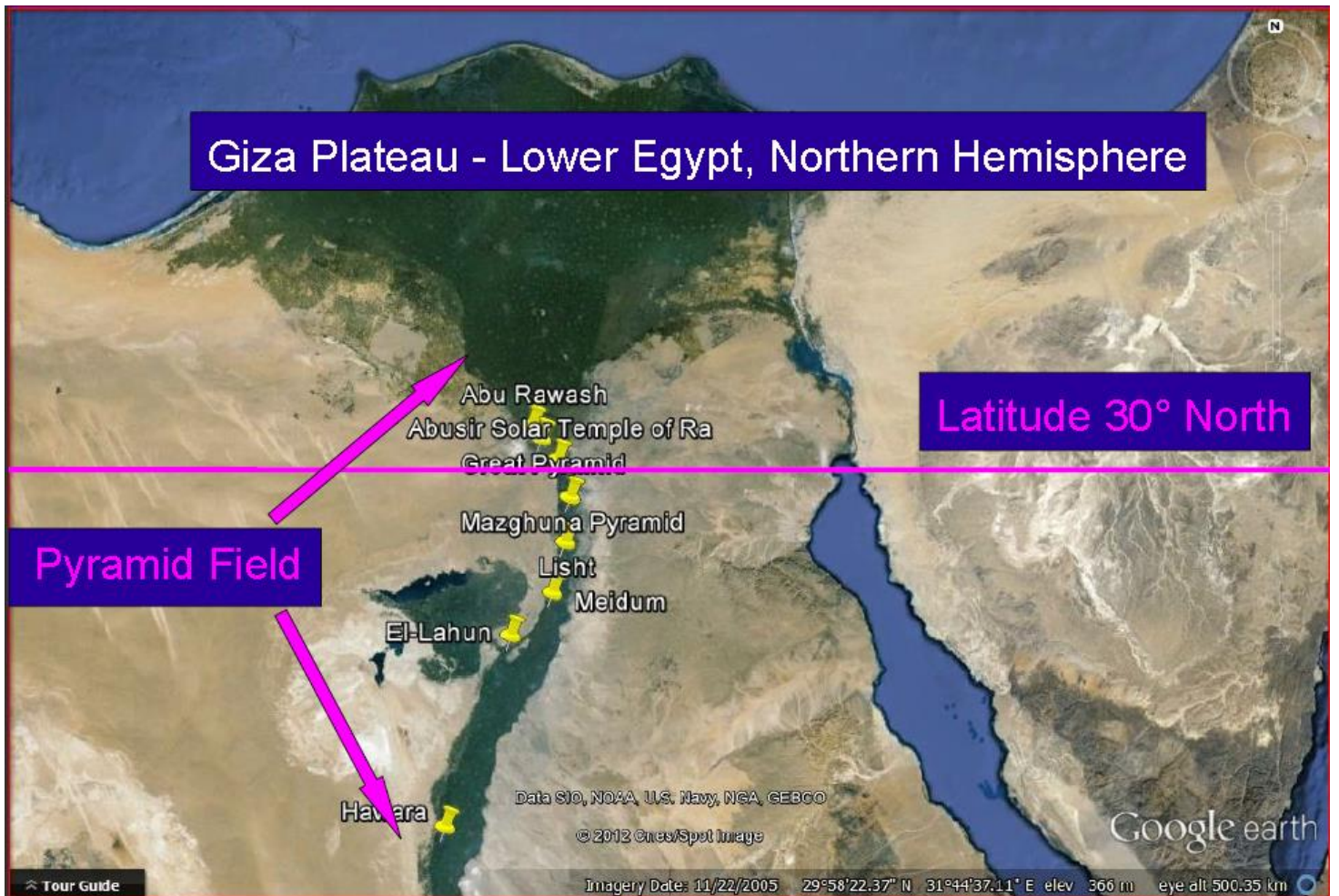
Grail Rock and fragment in Lightsaber used to create ‘Arcs of Consciousness’

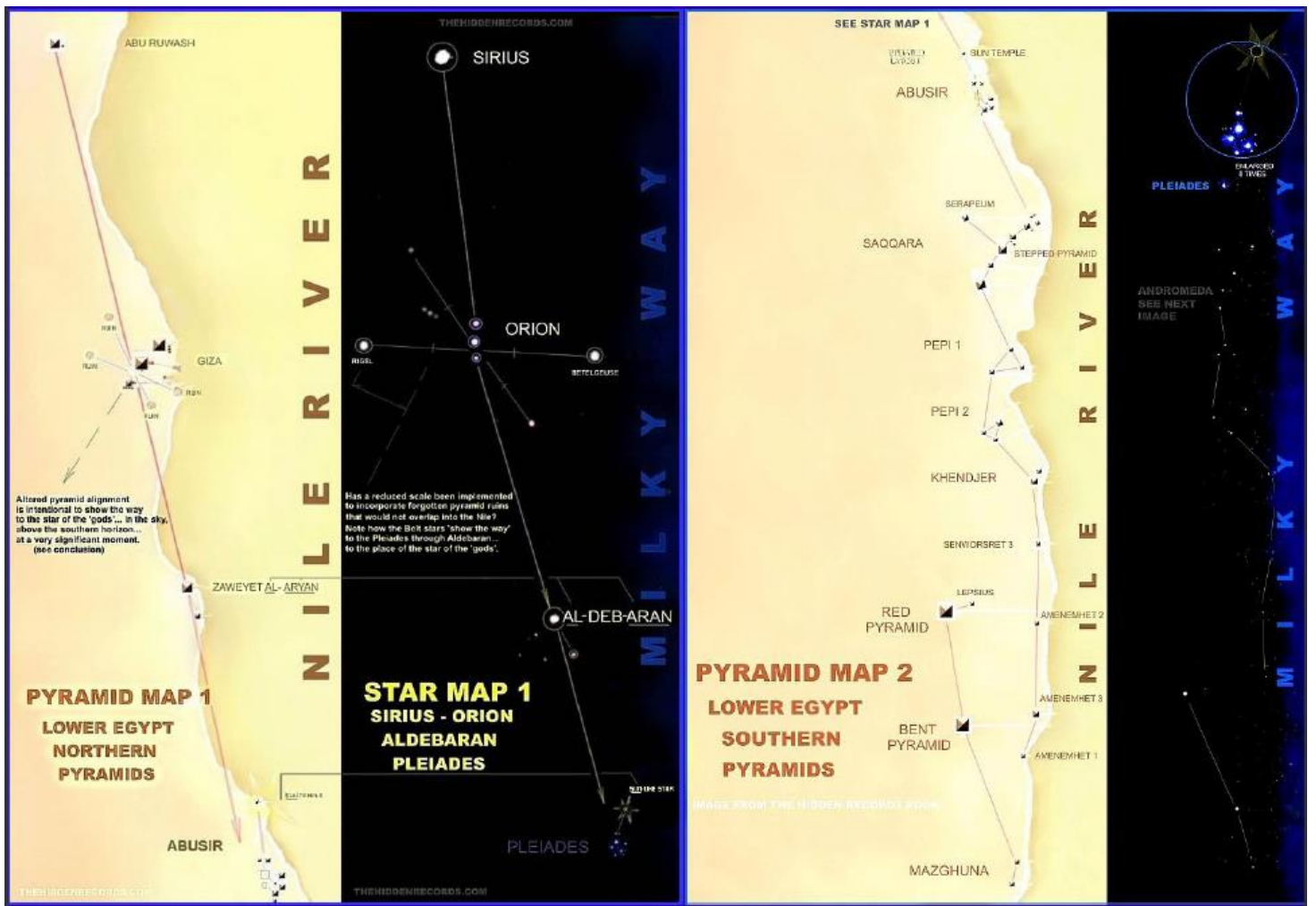


The Eye of Ra – The Eye and Word of God

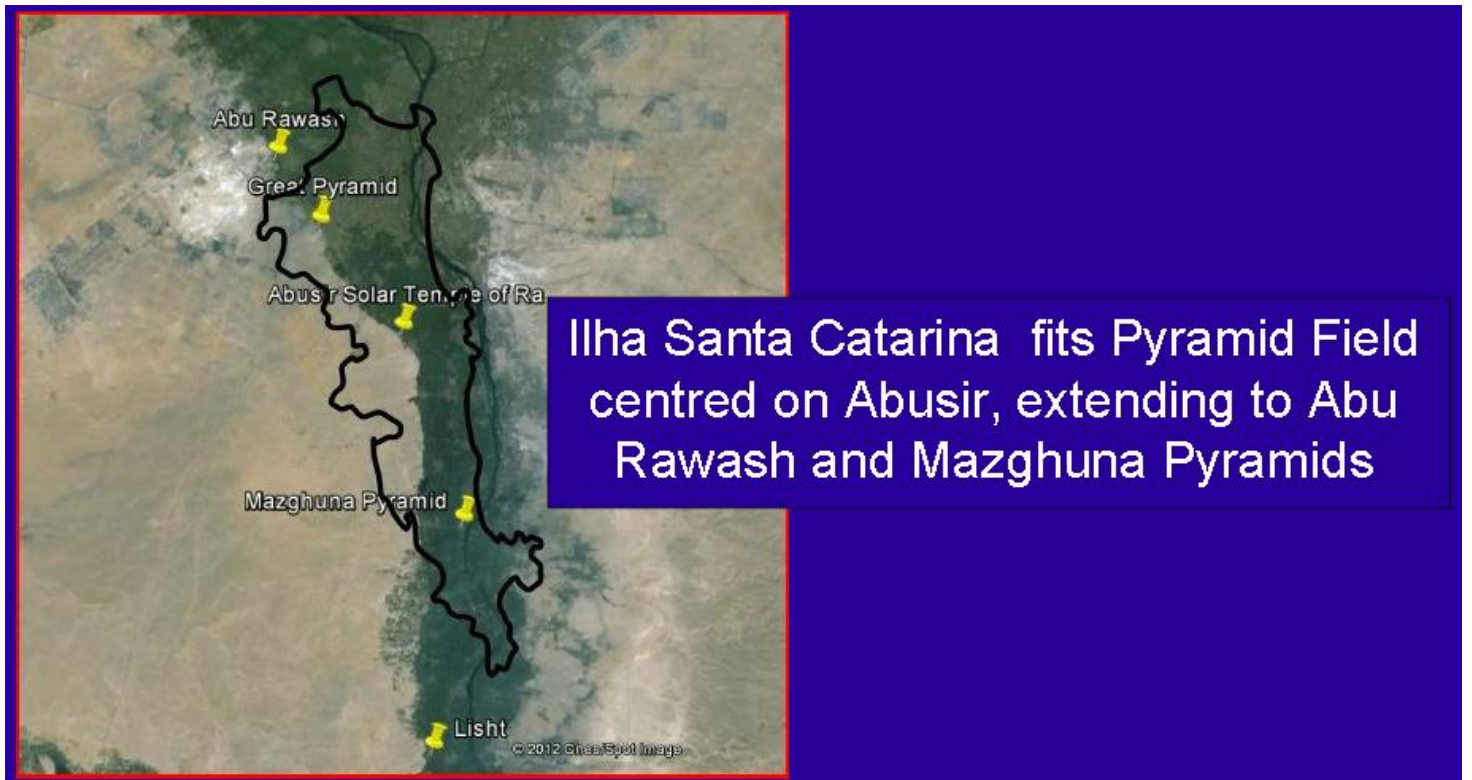


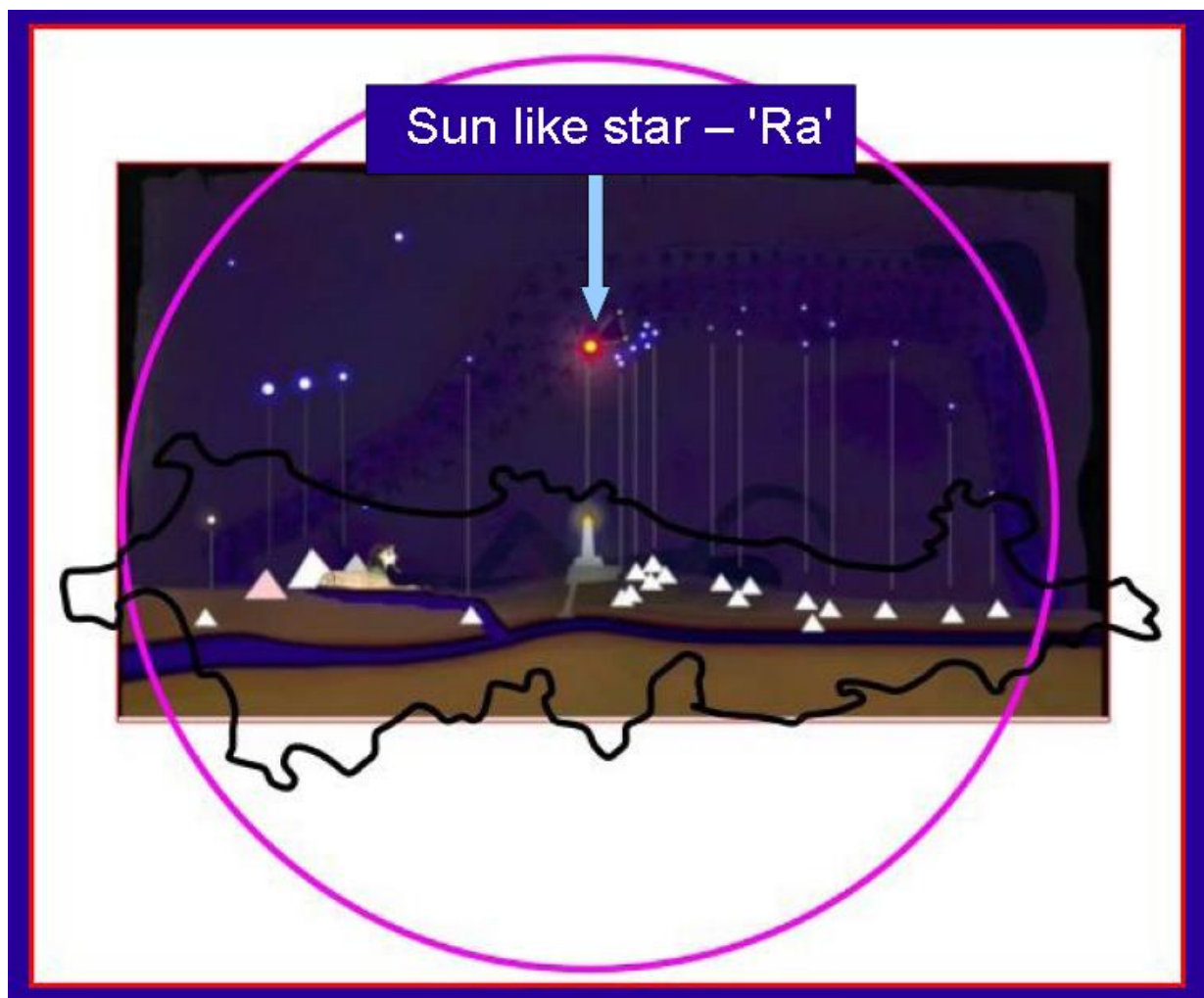
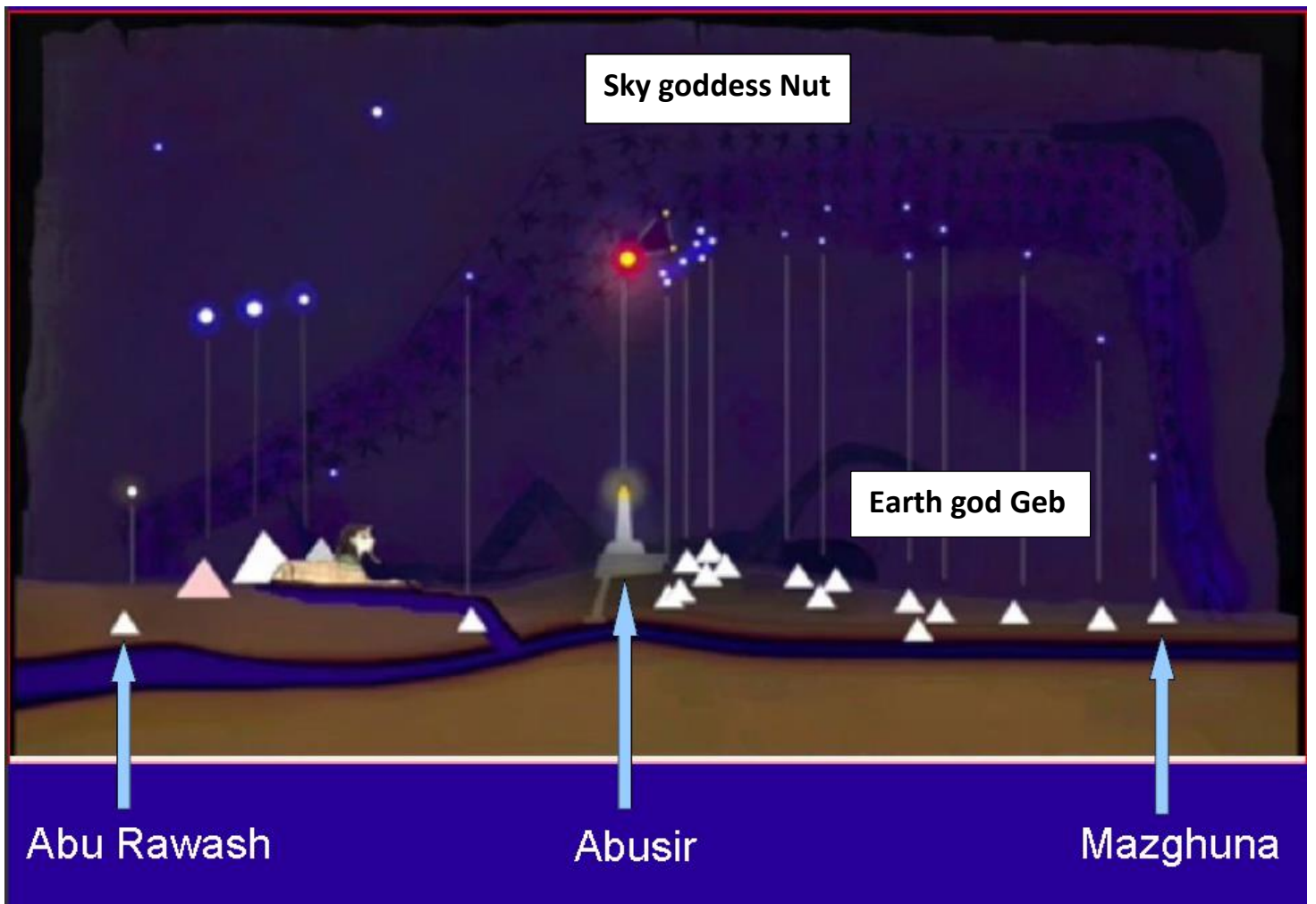
## 7. Iha Santa Catarina and the Egyptian Pyramid Field





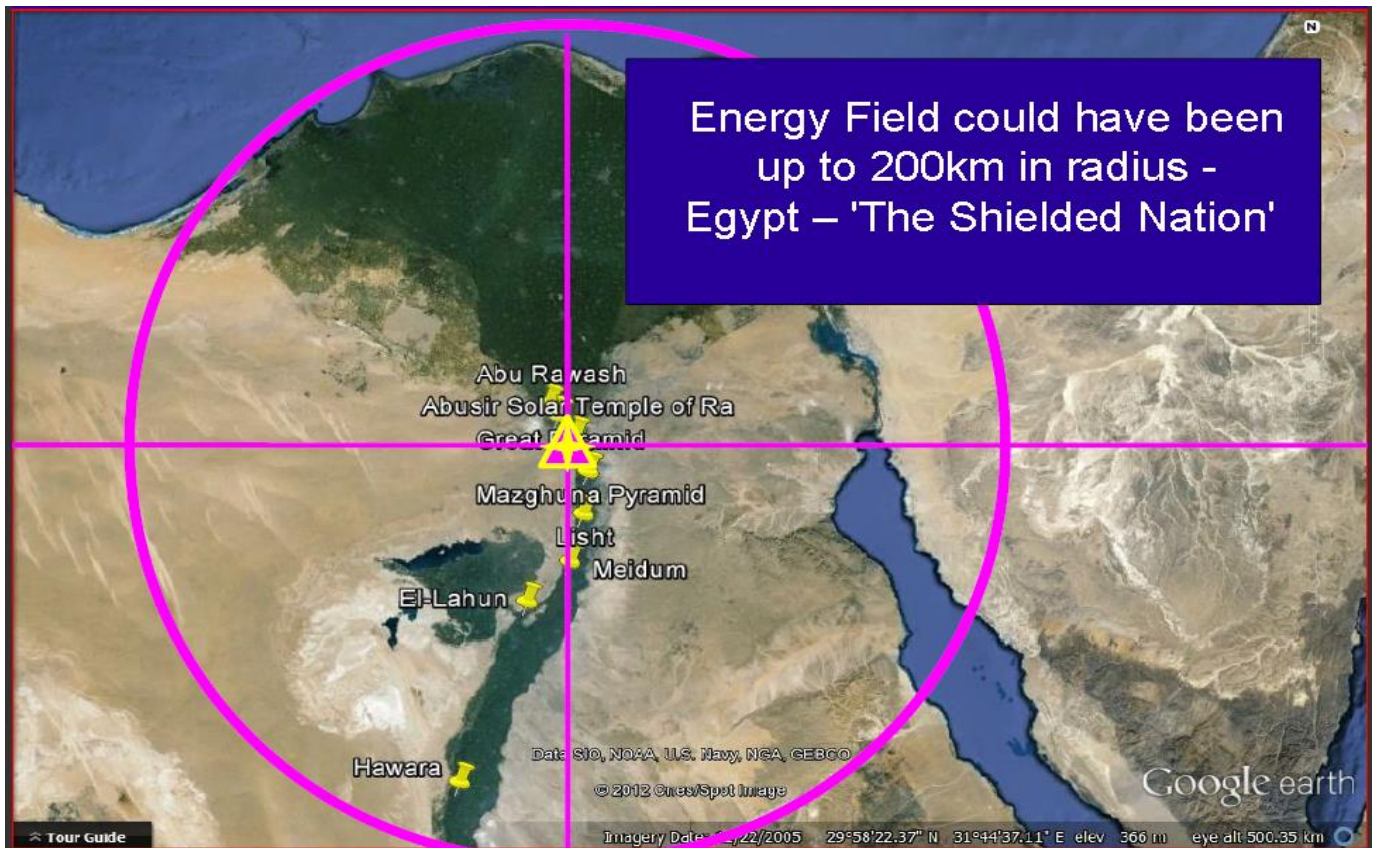
Egyptian Pyramid field layout matching star constellations Orion, Pleiades and associated stars.



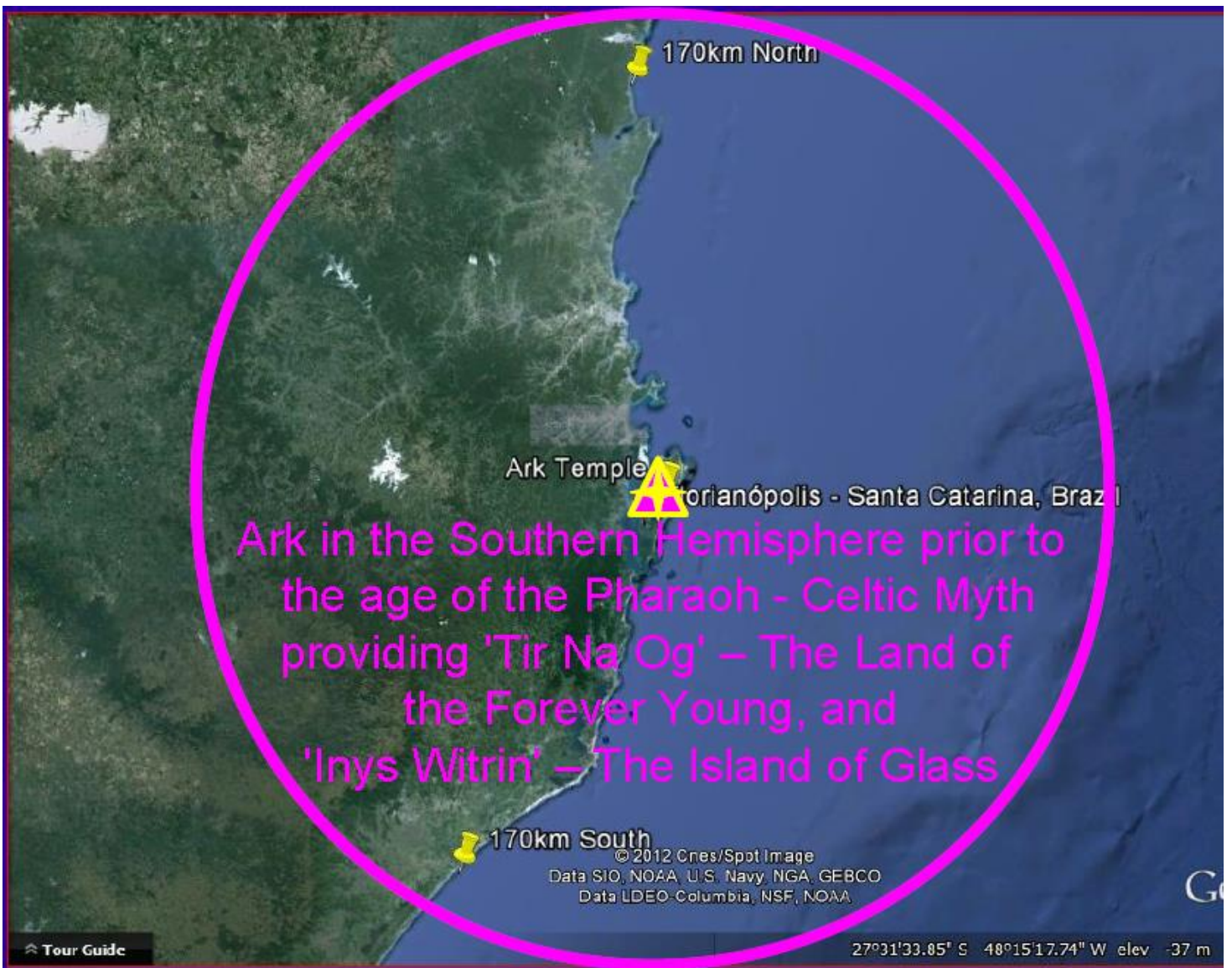




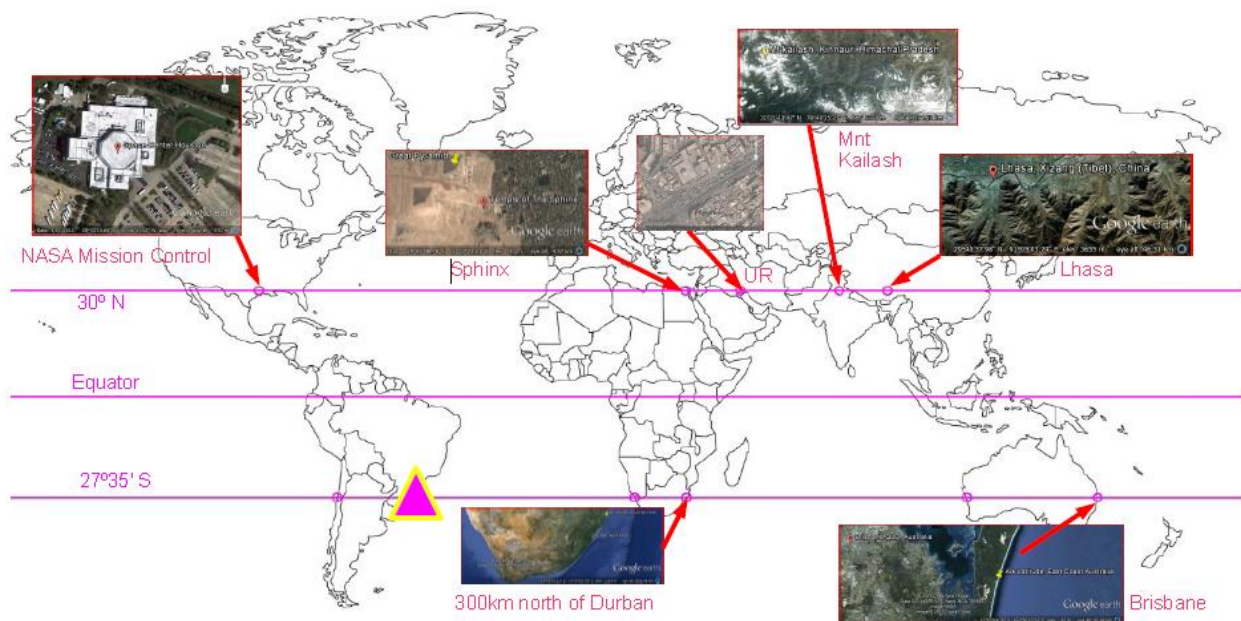
Activated Ark Capstone previously  
providing an 'Energy Field'  
centred on Abusir



Energy Field could have been  
up to 200km in radius -  
Egypt - 'The Shielded Nation'

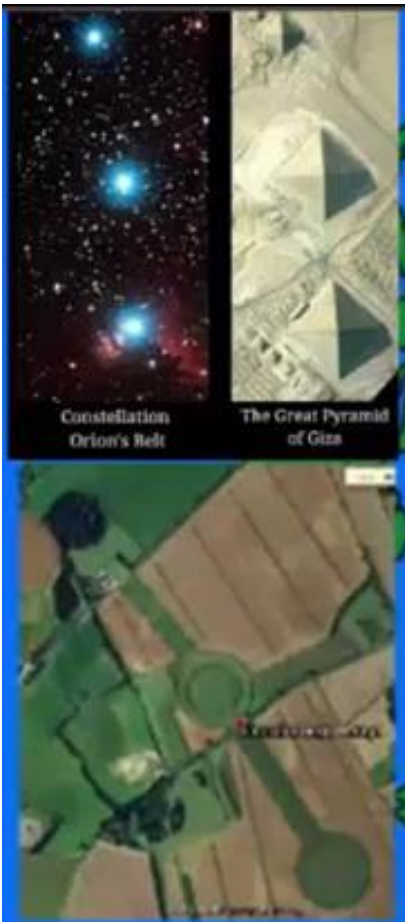


Significant northern hemisphere locations at latitude 30° N



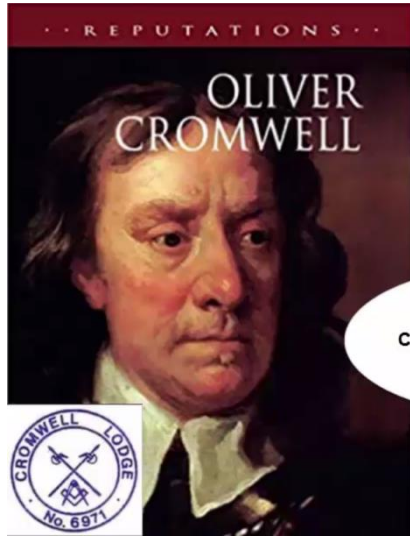
Phoenix Stargate  located on Ilha da Santa Catarina latitude 27°35' S  
 Latitude shared by countries South Africa, Australia, Chile and Argentina

## 8. Stargate Pennine



Fourteenth century tour party return to the British Isles and bury a fragment of Grail Rock underneath Lincoln Cathedral and then the remains of Grail Cauldron in close proximity of Thornborough Henge. The layout of three circular Yorkshire henges matching Giza pyramids and the constellation of Orion's belt.





Scenes from video 'The Cyborging Ethereal Bath'



Deported from Brazil to Peterborough 2012, I encountered a photo of girlfriend Fabiana Capel who first took me to Brazil in 1998.

Fabiana's photo for many years decorating the Lincoln Road until removal due to 2020 business lockdowns.

See video 'Ice Maidens of Atlantis – Lincoln Fields'.

I first met Fabiana Capel in a nightclub named 'The Castle' on Santa Monica Boulevard, Los Angeles 1998.

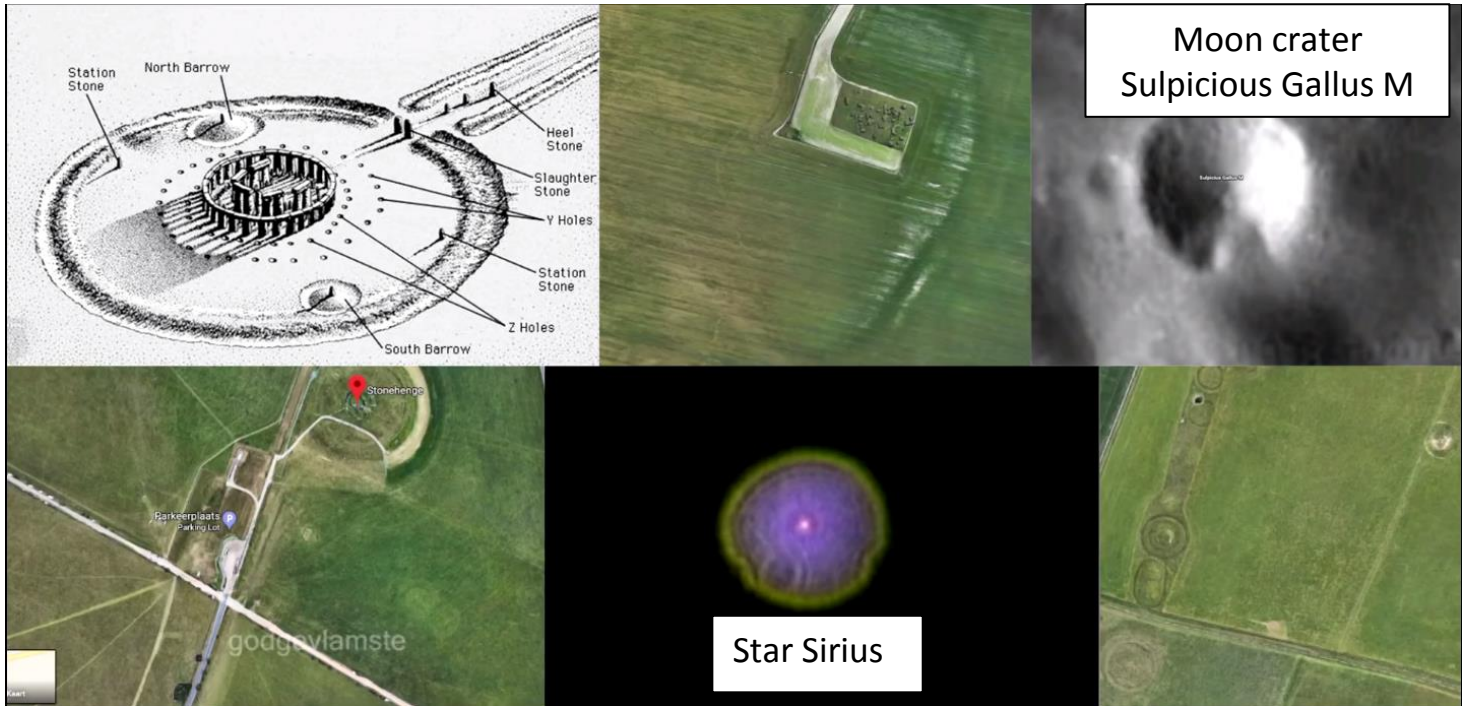




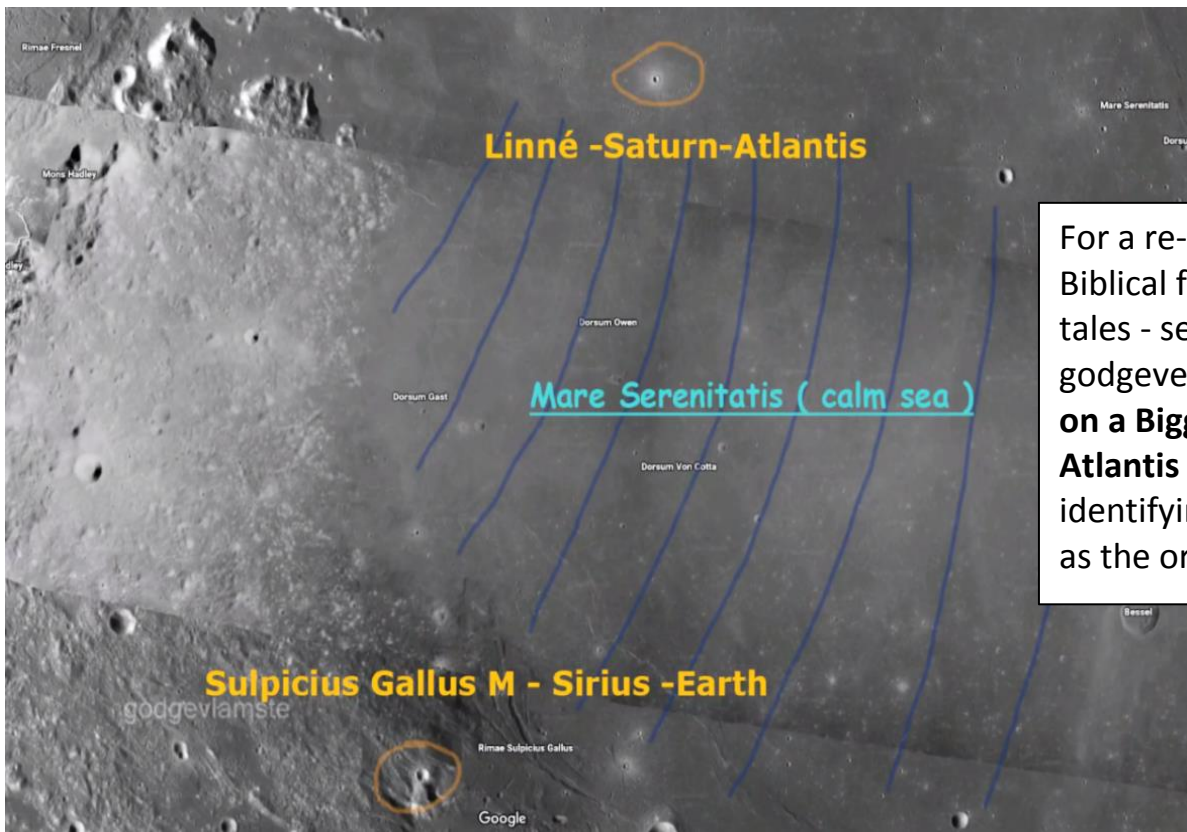
# 9. Grail Cauldron Location



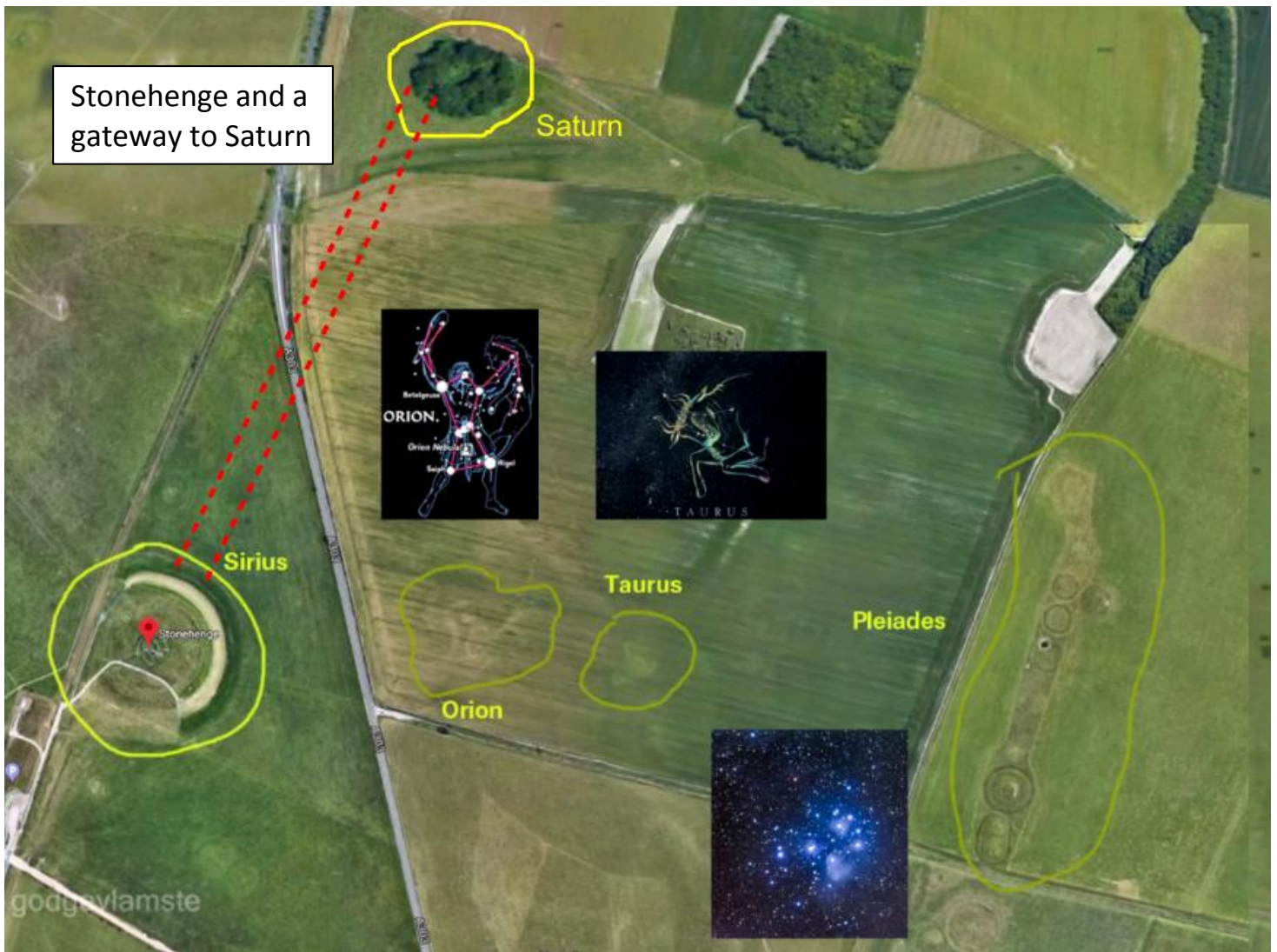
Our Crater Realm shines in the night sky as Sirius – The Dog Star



Stonehenge a monument to our crater and the star Sirius

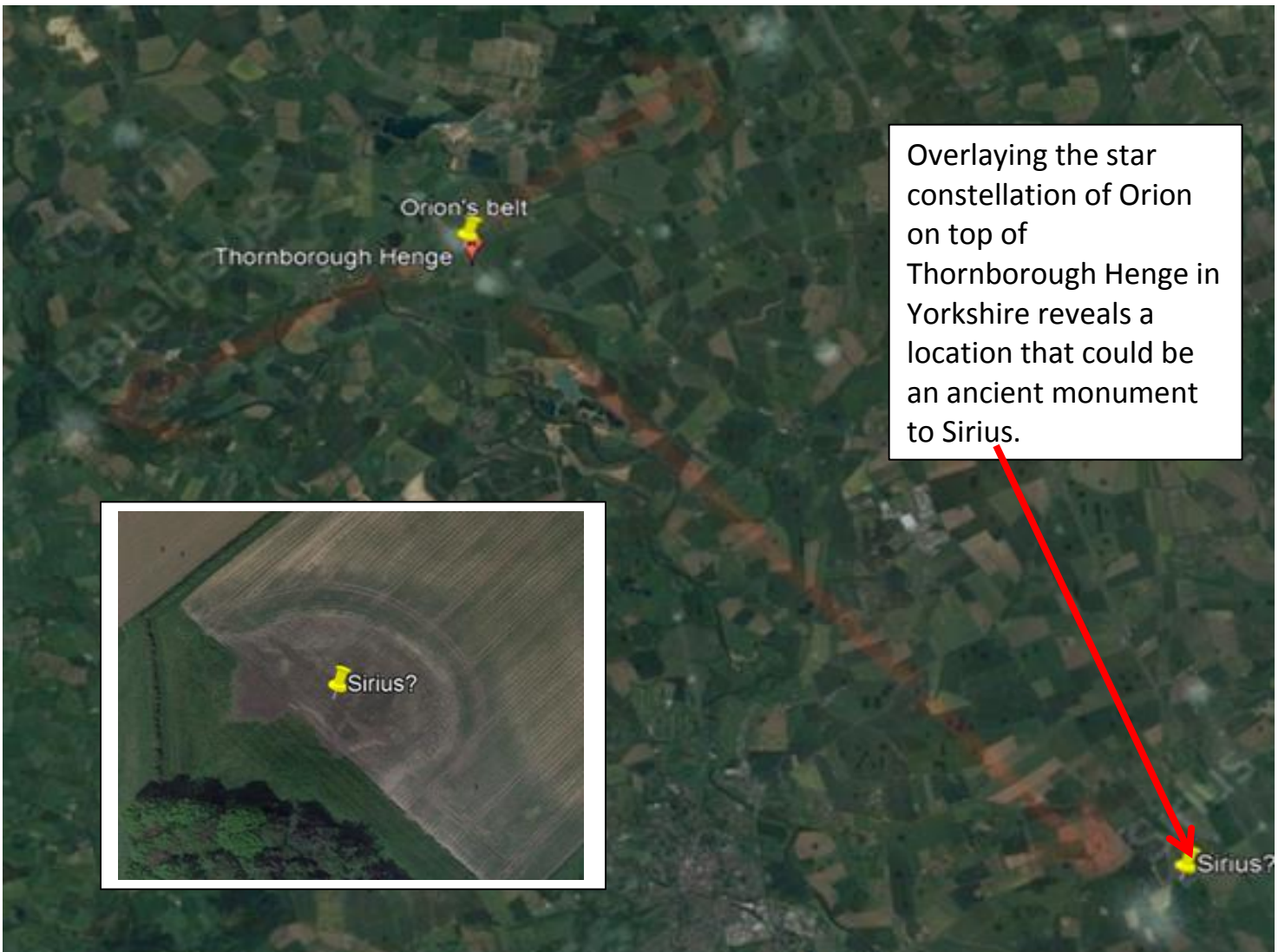
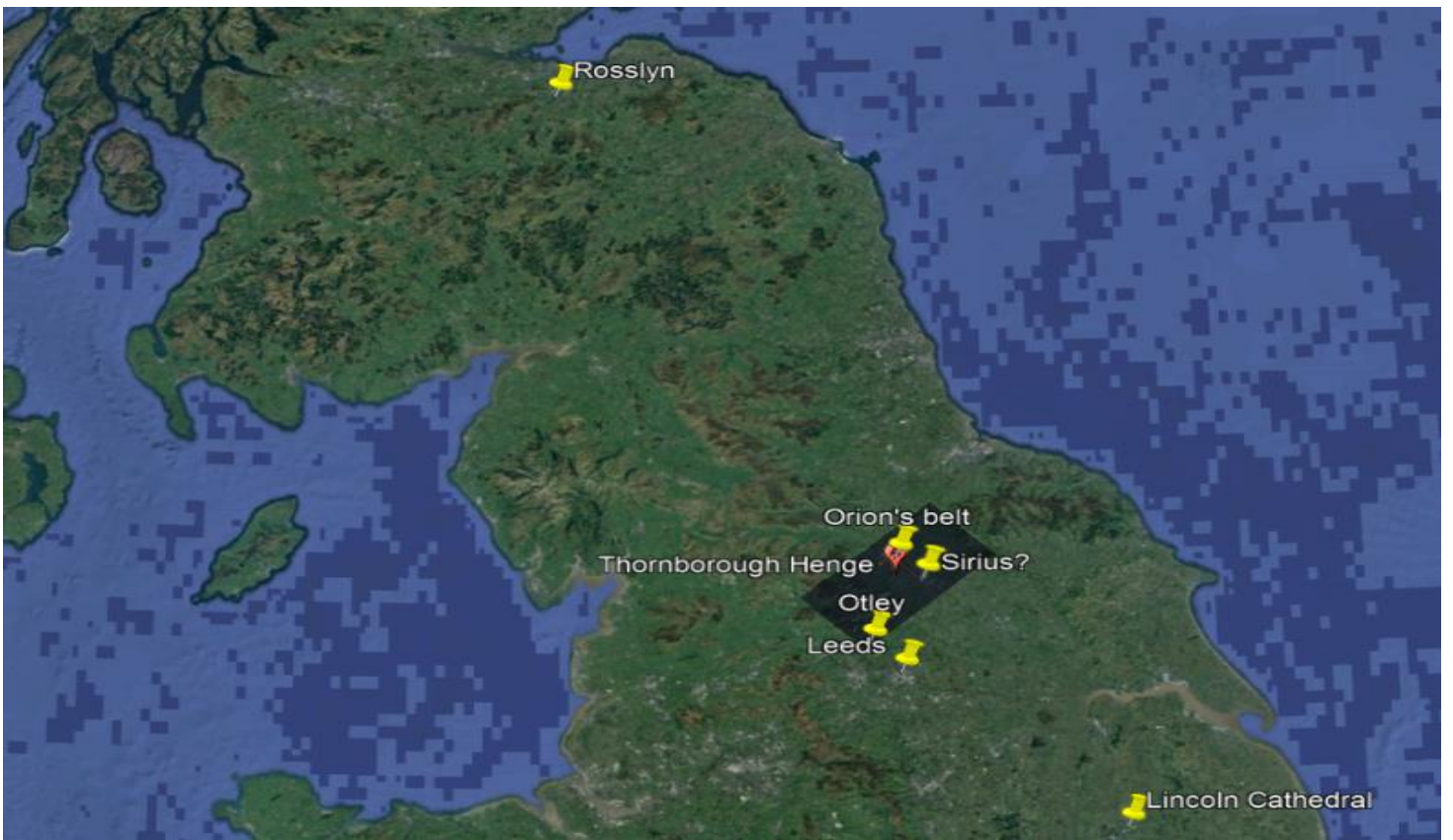


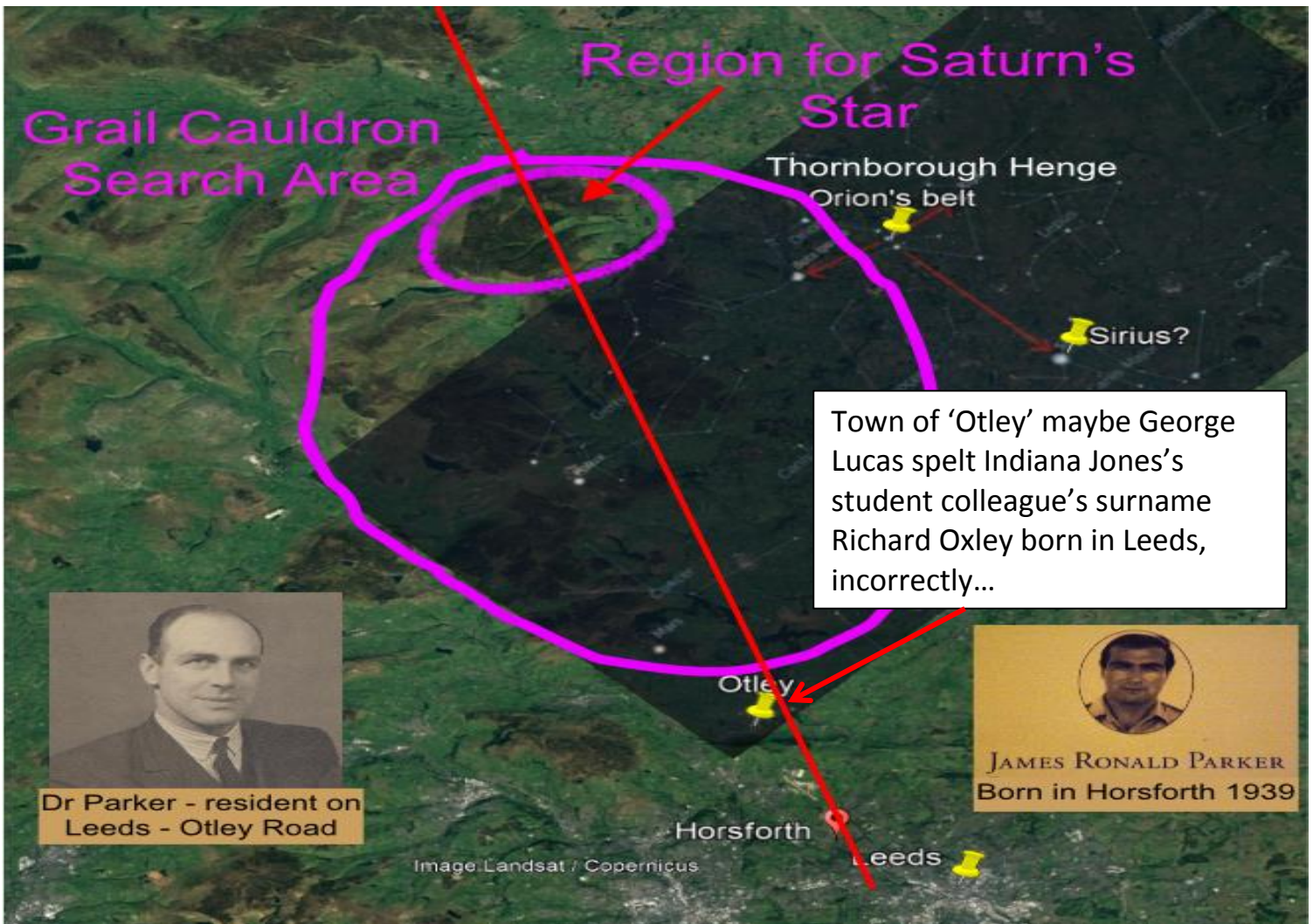
For a re-telling of the Biblical flood and Exodus tales - see video godgevlamste 'We live on a Bigger Earth, Atlantis revealed', identifying crater Saturn as the original Atlantis.



Stonehenge and a gateway to Saturn

Stonehenge monument also featuring a gateway path to Saturn (Atlantis) and the constellations Orion, Taurus and Pleiades.

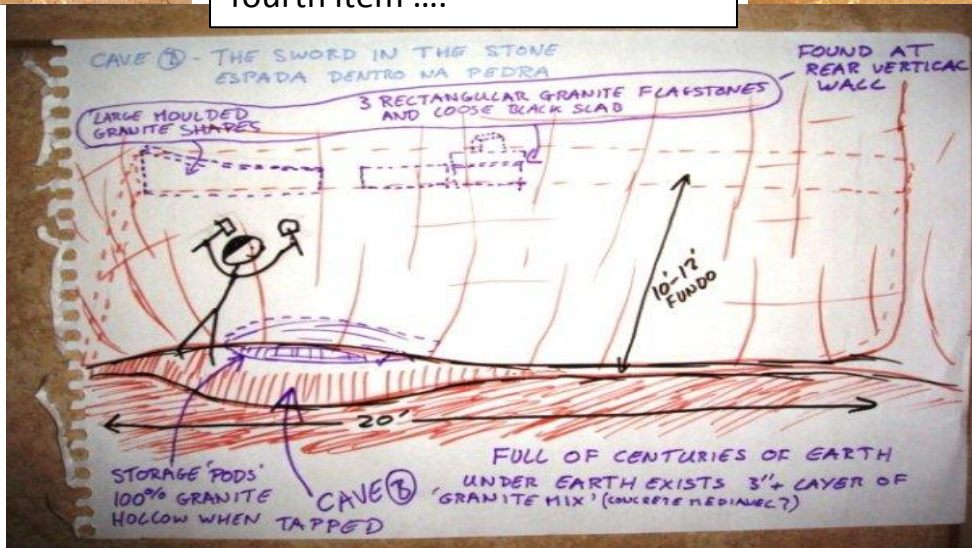
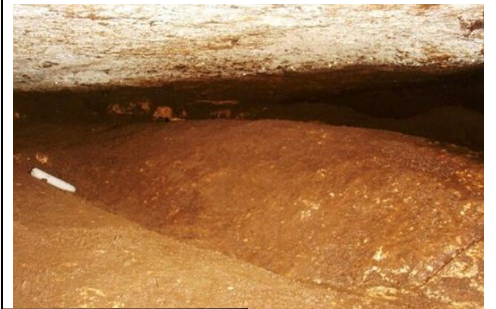




Location coincidence of grandfather Dr Parker's employment as a GP, my father's birth place and Leeds University being my first experience of life in an electrified steel framed building as a Mechanical Engineering student 1988-1991. Google setting up search region for the Grail Cauldron.



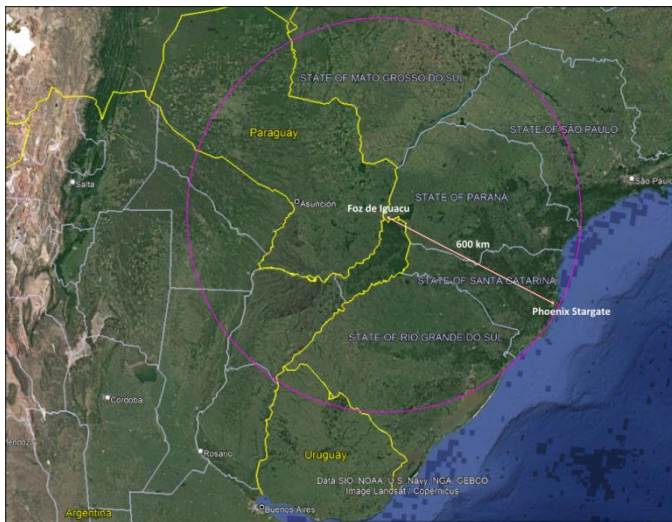
Precarious low height cave on Illha Santa Catarina (Tir Na Nog – the Land of the Forever Young) storing the Sword(s) in the Stone of three items moulded in granite – plus a fourth item ....



## 10. Iguacu Falls, a Terraforming Dome and the Grail Squadron



600 km from Phoenix Stargate are the Iguazu waterfalls of the Iguazu River on the border of the Argentine province of Misiones and the Brazilian state of Paraná. Together, they make up the largest waterfall system in the world. The falls divide the river into the upper and lower Iguazu.



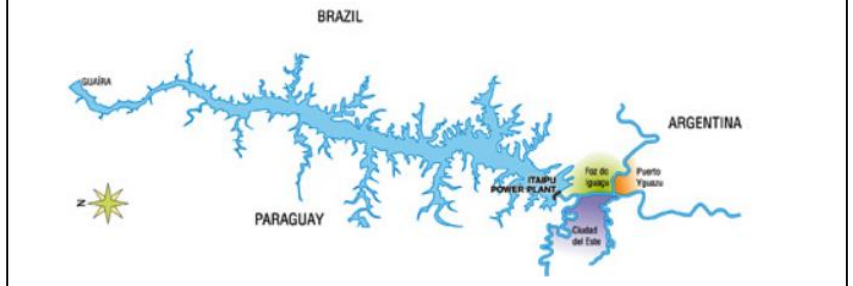
The name Iguazú comes from the Guarani or Tupi words "y" [i], meaning "water", and "ûasú" [wa'su], meaning "big". Legend has it that a deity planned to marry a beautiful woman named Naipí, who fled with her mortal lover Tarobá in a canoe. In a rage, the deity sliced the river, creating the waterfalls and condemned the lovers to an eternal fall.



30 km from Iguazu Falls is the Itaipu Hydroelectric Dam whose construction formed the Itaipu Lake in 1982.

The Itaipu reservoir, with a flooded area of 1,350 km<sup>2</sup>, is the seventh largest in Brazil, but holds the best coefficient of water utilization for electricity generation of all the large Brazilian reservoirs.

The production coefficient of water utilization at Itaipu is 10.4 MW per km<sup>2</sup>, (i.e., each 0.1 km<sup>2</sup> of flooded area can generate 1 MW).



Itaipu Hydroelectric Dam is the world's second-largest operational hydroelectric power plant in terms of installed power. With an installed generation capacity of 14GW, the plant is operated by Itaipu Binacional and located on the border between Brazil and Paraguay. Energy generated by Itaipu helps to meet the demands of the two countries. Approximately 90% of the energy generated by the plant is used by Brazil.

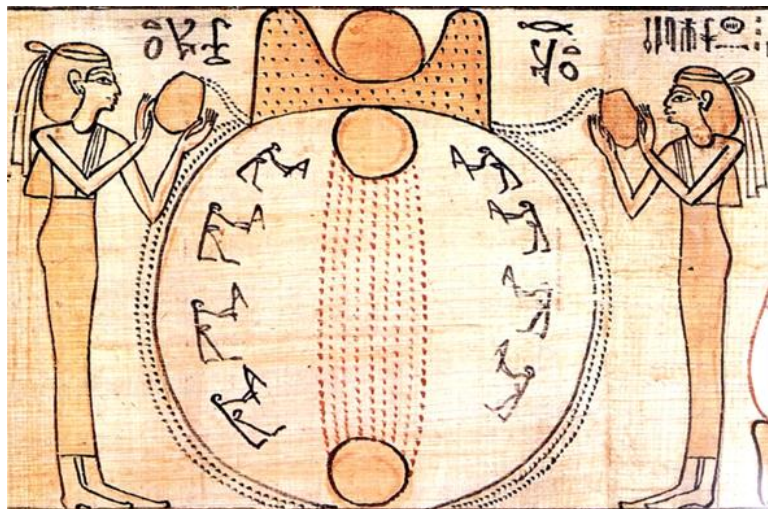
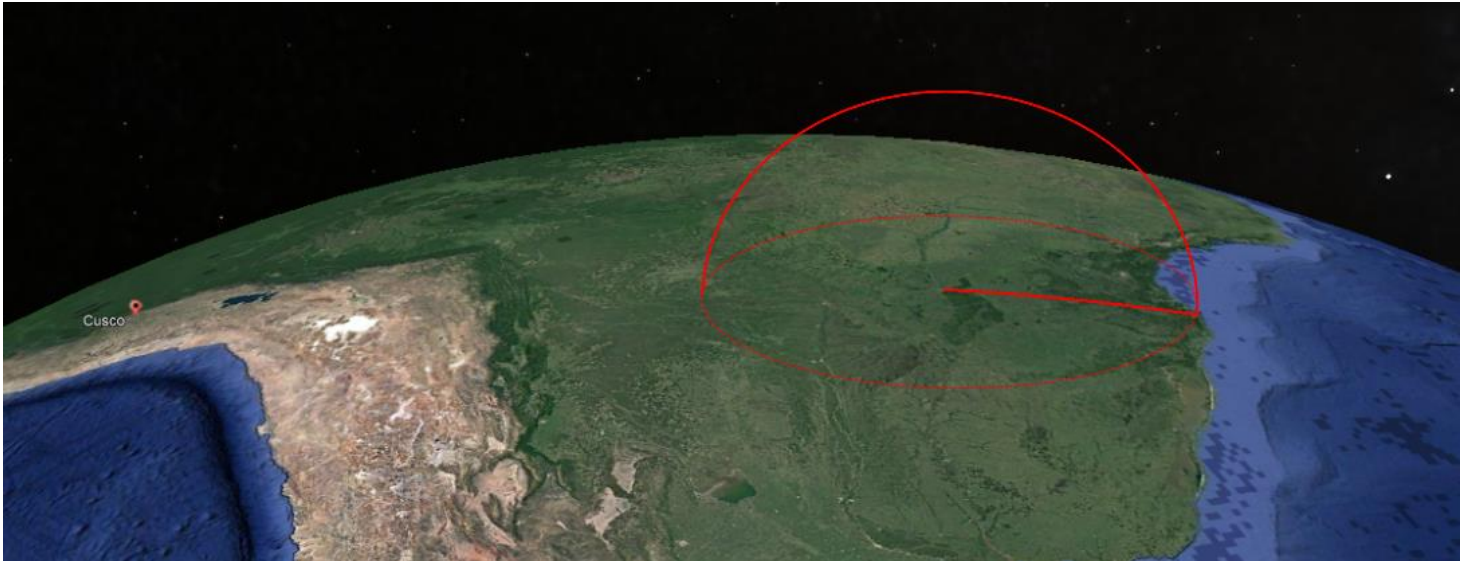


Image from 'Lifting the Veil' and Chapter 3 'Paradise Lost and Atlantis Rebuilt with the First Jerusalem'

Egyptian 'Terra Forming' myth featuring the creation of an outer rim of water to create the firmament dome and the Solomon star energy field between the Pillars of Hercules and Paradise.



Chapter 5. 'The Ben Ben Stone and Phoenix Stargate' highlights the UFO recorded over Praia Mole and Phoenix Stargate in 2018.

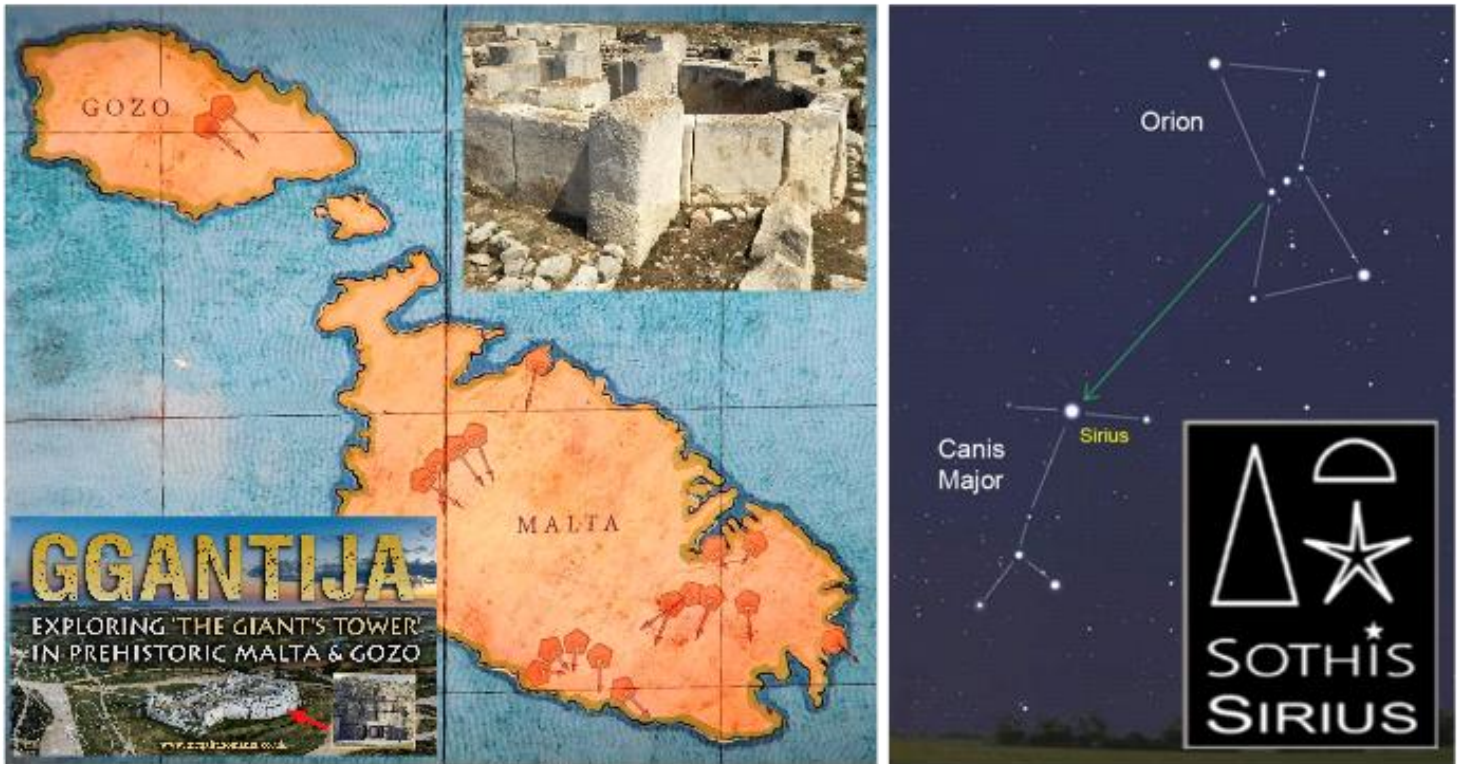


Is a mission developing by incoming 'Terra-Formers' to utilise the waters of Itaipu and create a protective dome?



Perhaps a 'Grail Squadron' featuring the Wigetworks Airfish 8 introduced in chapter 12 'Return of the Jedi's Flying Boats' of Establishing Embassy 'Camaialot' could be established in the region of Itaipu lake. Would be pilots recruited through 'As Surfistas da Roda' surfing competition for the Sword in the Stone.

## 11. Multiple Stargates of our Crater Realm



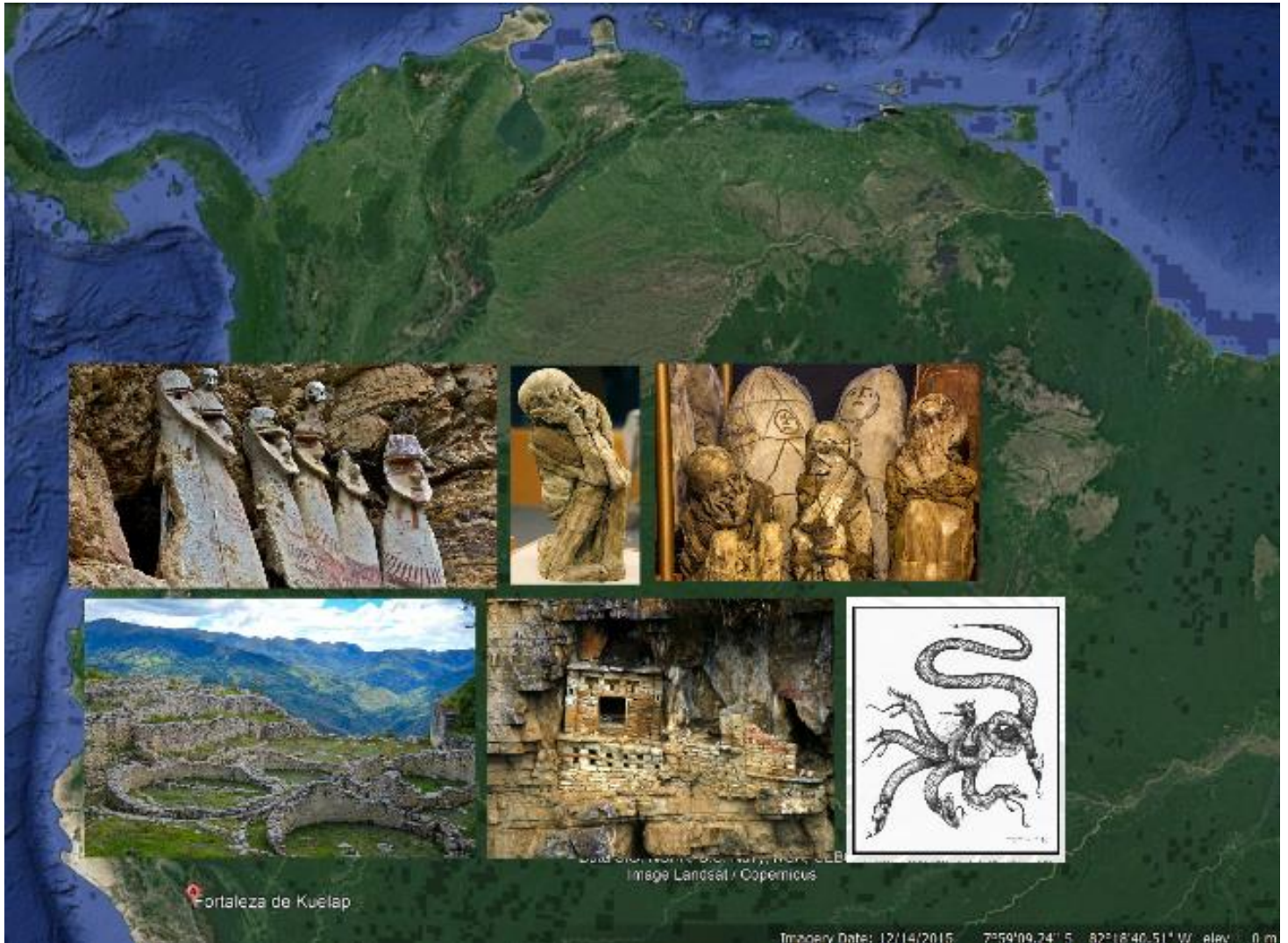
Graham Hancock Netflix series 'Ancient Apocalypse' features the Maltese temples of Ggantija and the Turkish temples of Gobekli Tempe highlighting their alignment to the star Sirius. See '*Establishing Embassy Lifting the Veil, Chapter 2, Crater Earth and the Technological Underground*', introducing Sirius as a decoration in the firmament of our crater realm mapped on the moon as crater 'Sulpicious Gallus M'.



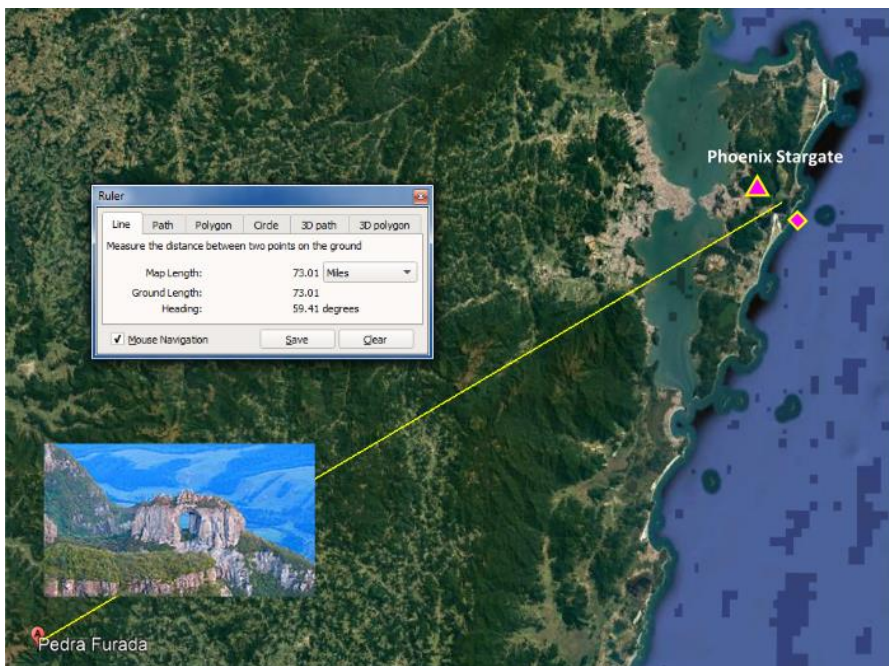
Are these ancient temples functioning as Stargates targeting a particular point of firmament entry to our crater realm from locations on the Greater Earth – '**Interstellar Travellers**'?



YouTube channel Oowk Media and video 'The Sky People of Peru' <https://youtu.be/ZoJGxFF0x04> features the isolated Kuelap Fortress high in the mountains – The Chachapoya. Regarded as a race of tall blue eyed beauties of Pleiadian origin practising mummification, their circular settlements are non Inca in construction.



Incan legends warn of the Chachapoya region being enchanted and not to be disturbed as is protected by a seven headed serpent. Does the multi headed serpent represent plasma energy emanating from a wormhole see 'Establishing Embassy – Camaialot B Chapter 4 Stargates of the World United'?



Website 'Leylines.net' provides an overlay mapped database of recognised Stargates, one local to 'Phoenix Stargate' is 'Pedra Furada', an interstellar portal located in the State of Santa Catarina, Brazil. Aligned with other portals like Stonehenge, Aramu Muru, and Puma Punku. Among a breath taking view, this massive carved stone is sitting atop a very high altitude mountain, above the clouds. Whoever built it was really trying to reach the stars. This stone also has enigmatic inscriptions like the "Ingá Stone".

**Pedra Furada situated about 73 miles from Phoenix Stargate**